

VWR® Consumables

Quality lab products for everyday use



Essential lab consumables for everyday laboratory use

The VWR® range has been meticulously crafted for your convenience, offering an array of essential labware that helps empower your laboratory to function seamlessly and achieve optimal efficiency.

Our commitment to delivering quality products is evident in our extensive selection, which includes gloves, petri dishes, pipettes, reusable garments, wipes, swabs, beakers, glassware and beyond.

Designed to meet a diverse range of applications, these consumables are indispensable tools that uphold the highest standards of performance and reliability. We understand the significance of these supplies in your daily pursuits, so, we ensure that each item within our collection exudes quality, provides excellent value and offers utmost convenience.

With VWR®, you'll be able to concentrate on what truly matters – your research and endeavors. Our products and services provide the support you need to focus on advancing scientific progress and achieving remarkable outcomes.



01

CHROMATOGRAPHY

02

LIQUID HANDLING

03

STORAGE

04

PHARMA CLEANROOM

05

FOOD & BEVERAGES



Chromatography Solutions

Chromatography and spectrometry are important techniques that have many scientific, academic, and industrial applications. Avantor® has a comprehensive range of equipment, products and services that can help you improve efficiency and outcomes in your laboratory.



Chromatography Solutions

Avantor® chromatography products empower discovery, development and routine analysis through cutting-edge chromatography solutions.

PORTFOLIO OVERVIEW

- U/HPLC Columns
- GC Columns
- Syringe Filters
- TLC Plates



U/HPLC COLUMNS

With over 40 years of experience in developing, manufacturing, and commercializing an extensive range of HPLC & UPLC columns, the Avantor® Hichrom and Avantor® ACE® brands perform within the most challenging applications.

Range Includes:

- Regular stationary phases (C8, C18, Phenyl, CN, AQ, Silica, etc.)
- Novel stationary phases (C18-PFP, C18-AR, SuperC18, CN-ES, etc.)
- Core-shell columns from Ultracore range
- Specialized & wide pore columns for glycans, oligos & large molecules
- Preparative scale columns for purification and isolation
- Guard cartridges, pre-column filters & connectors
- Wide variety of particle size, pore size, and dimensions for every application need



AVANTOR® HICHROM GC CAPILLARY COLUMNS

Avantor® Hichrom offers more than 50 different phases in GC capillary columns. This allows analysts to use the widest range of chemistries for their GC application requirements.

- Regularly used phases like HI-1, HI-5, HI-50, HI-WAX, HI-624, HI-FFAP & HI-1701, etc.
- Chiral phase columns for stereoisomers analysis
- Proprietary phase columns for biodiesel, VOCs, blood alcohol level, PAH, amines, lipid and pesticide analysis
- Availability of HT, MS, MS XIL formats allows analysts to choose column format as per requirement



SYRINGE FILTERS

High-performance syringe filters engineered to provide highly efficient filtration solutions.

J.T.Baker® range includes

- Nylon, PTFE, PVDF, PES, Cellulose acetate, Regenerated Cellulose & Glass fiber filters
- Non-sterile filters
- Hydrophobic & Hydrophilic PTFE filters



Description	Pack size	Cat. No.
J.T.BAKER® SF RC 13MM 0.2M NS	200	BAKRSF02-68
J.T.BAKER® SF RC 13MM 0.45M NS	200	BAKRSF02-72
J.T.BAKER® SF RC 25MM 0.2M NS	200	BAKRSF02-76
J.T.BAKER® SF RC 25MM 0.45M NS	200	BAKRSF02-80
J.T.BAKER® SF RC-GF 25MM 0.45M NS	200	BAKRSF02-82
J.T.BAKER® SF RC 30MM 0.2M NS	200	BAKRSF02-88
J.T.BAKER® SF RC 30MM 0.45M NS	200	BAKRSF02-92
J.T.BAKER® SF NYLON 13MM 0.2M NS	200	BAKRSF01-42
J.T.BAKER® SF NYLON 13MM 0.45M NS	200	BAKRSF01-46
J.T.BAKER® SF NYLON 25MM 0.2M NS	200	BAKRSF01-50
J.T.BAKER® SF NYLON 25MM 0.45M NS	200	BAKRSF01-54
J.T.BAKER® SF NYLON-GF 25MM 0.45M NS	200	BAKRSF01-58
J.T.BAKER® SF NYLON 30MM 0.2M NS	200	BAKRSF01-70
J.T.BAKER® SF NYLON 30MM 0.45M NS	200	BAKRSF01-74
J.T.BAKER® SF NYLON 30MM 1M NS	200	BAKRSF01-64
J.T.BAKER® SF GLASS FIBER 13MM 1M NS	200	BAKRSF01-02
J.T.BAKER® SF GLASS FIBER 25MM 1M NS	200	BAKRSF01-06
J.T.BAKER® SF GLASS FIBER 30MM 1M NS	200	BAKRSF01-10
J.T.BAKER® SF H-PTFE 13MM 0.2M NS	200	BAKRSF01-14
J.T.BAKER® SF H-PTFE 13MM 0.45M NS	200	BAKRSF01-18
J.T.BAKER® SF H-PTFE 25MM 0.2M NS	200	BAKRSF01-22
J.T.BAKER® SF H-PTFE 25MM 0.45M NS	200	BAKRSF01-26
J.T.BAKER® SF H-PTFE-GF 25MM 0.45M NS	200	BAKRSF01-28
J.T.BAKER® SF H-PTFE 30MM 0.2M NS	200	BAKRSF01-34
J.T.BAKER® SF H-PTFE 30MM 0.45M NS	200	BAKRSF01-38
J.T.BAKER® SF PTFE 13MM 0.2M NS	200	BAKRSF02-32
J.T.BAKER® SF PTFE 13MM 0.45M NS	200	BAKRSF02-36
J.T.BAKER® SF PTFE 25MM 0.2M NS	200	BAKRSF02-40
J.T.BAKER® SF PTFE 25MM 0.45M NS	200	BAKRSF02-44
J.T.BAKER® SF PTFE-GF 25MM 0.45M NS	200	BAKRSF02-46
J.T.BAKER® SF PTFE 30MM 0.2M NS	200	BAKRSF02-58
J.T.BAKER® SF PTFE 30MM 0.45M NS	200	BAKRSF02-62
J.T.BAKER® SF PTFE 30MM 1M NS	200	BAKRSF02-52
J.T.BAKER® SF PES 13MM 0.1µM NS	200	BAKRSF01-78
J.T.BAKER® SF PES 13MM 0.2M NS	200	BAKRSF01-82
J.T.BAKER® SF PES 13MM 0.45M NS	200	BAKRSF01-86
J.T.BAKER® SF PES-GF 13MM 0.45M NS	200	BAKRSF01-88
J.T.BAKER® SF PES 25MM 0.1M NS	200	BAKRSF01-94
J.T.BAKER® SF PES 25MM 0.2M NS	200	BAKRSF01-98
J.T.BAKER® SF PES 25MM 0.45M NS	200	BAKRSF02-04
J.T.BAKER® SF PES-GF 25MM 0.45M NS	200	BAKRSF02-06
J.T.BAKER® SF PES 30MM 0.1M NS	200	BAKRSF02-16
J.T.BAKER® SF PES 30MM 0.2M NS	200	BAKRSF02-20
J.T.BAKER® SF PES 30MM 0.45M NS	200	BAKRSF02-24
J.T.BAKER® SF PES 30MM 0.45M NS	200	BAKRSF02-26
J.T.BAKER® SF PES 30MM 1M NS	200	BAKRSF02-12

Description	Pack size	Cat. No.
J.T.BAKER® SF, RC 13MM 0.2M NS	1000	BAKRSF02-70
J.T.BAKER® SF, RC 13MM 0.45M NS	1000	BAKRSF02-74
J.T.BAKER® SF, RC 25MM 0.2M NS	1000	BAKRSF02-78
J.T.BAKER® SF, RC 25MM 0.45M NS	1000	BAKRSF02-86
J.T.BAKER® SF, RC-GF 25MM 0.45M NS	1000	BAKRSF02-84
J.T.BAKER® SF, RC 30MM 0.2M NS	1000	BAKRSF02-90
J.T.BAKER® SF, RC 30MM 0.45M NS	1000	BAKRSF02-94
J.T.BAKER® SF, NYLON 13MM 0.2M NS	1000	BAKRSF01-44
J.T.BAKER® SF, NYLON 13MM 0.45M NS	1000	BAKRSF01-48
J.T.BAKER® SF, NYLON 25MM 0.2M NS	1000	BAKRSF01-52
J.T.BAKER® SF, NYLON 25MM 0.45M NS	1000	BAKRSF01-62
J.T.BAKER® SF, NYLON-GF 25MM 0.45M NS	1000	BAKRSF01-60
J.T.BAKER® SF, NYLON 30MM 0.2M NS	1000	BAKRSF01-72
J.T.BAKER® SF, NYLON 30MM 0.45M NS	1000	BAKRSF01-76
J.T.BAKER® SF, NYLON 30MM 1M NS	1000	BAKRSF01-68
J.T.BAKER® SF, GLASS FIBER 13MM 1M NS	1000	BAKRSF01-04
J.T.BAKER® SF, GLASS FIBER 25MM 1M NS	1000	BAKRSF01-08
J.T.BAKER® SF, GLASS FIBER 30MM 1M NS	1000	BAKRSF01-12
J.T.BAKER® SF, H-PTFE 13MM 0.2M NS	1000	BAKRSF01-16
J.T.BAKER® SF, H-PTFE 13MM 0.45M NS	1000	BAKRSF01-20
J.T.BAKER® SF, H-PTFE 25MM 0.2M NS	1000	BAKRSF01-24
J.T.BAKER® SF, H-PTFE 25MM 0.45M NS	1000	BAKRSF01-32
J.T.BAKER® SF, H-PTFE-GF 25MM 0.45M NS	1000	BAKRSF01-30
J.T.BAKER® SF, H-PTFE 30MM 0.2M NS	1000	BAKRSF01-36
J.T.BAKER® SF, H-PTFE 30MM 0.45M NS	1000	BAKRSF01-40
J.T.BAKER® SF, PTFE 13MM 0.2M NS	1000	BAKRSF02-34
J.T.BAKER® SF, PTFE 13MM 0.45M NS	1000	BAKRSF02-38
J.T.BAKER® SF, PTFE 25MM 0.2M NS	1000	BAKRSF02-42
J.T.BAKER® SF, PTFE 25MM 0.45M NS	1000	BAKRSF02-50
J.T.BAKER® SF, PTFE-GF 25MM 0.45M NS	1000	BAKRSF02-48
J.T.BAKER® SF, PTFE 30MM 0.2M NS	1000	BAKRSF02-60
J.T.BAKER® SF, PTFE 30MM 0.45M NS	1000	BAKRSF02-64
J.T.BAKER® SF, PTFE 30MM 1M NS	1000	BAKRSF02-54
J.T.BAKER® SF, PES 13MM 0.1µM NS	1000	BAKRSF01-80
J.T.BAKER® SF, PES 13MM 0.2M NS	1000	BAKRSF01-84
J.T.BAKER® SF, PES 13MM 0.45M NS	1000	BAKRSF01-92
J.T.BAKER® SF, PES-GF 13MM 0.45M NS	1000	BAKRSF01-90
J.T.BAKER® SF, PES 25MM 0.1M NS	1000	BAKRSF01-96
J.T.BAKER® SF, PES 25MM 0.2M NS	1000	BAKRSF02-02
J.T.BAKER® SF, PES 25MM 0.45M NS	1000	BAKRSF02-10
J.T.BAKER® SF, PES-GF 25MM 0.45M NS	1000	BAKRSF02-08
J.T.BAKER® SF, PES 30MM 0.1M NS	1000	BAKRSF02-18
J.T.BAKER® SF, PES 30MM 0.2M NS	1000	BAKRSF02-22
J.T.BAKER® SF, PES 30MM 0.45M NS	1000	BAKRSF02-30
J.T.BAKER® SF, PES 30MM 0.45M NS	1000	BAKRSF02-28
J.T.BAKER® SF, PES 30MM 1M NS	1000	BAKRSF02-14

VWR® SYRINGE FILTERS

VWR® Syringe Filter – your versatile lab companion. Tailored for clarification, sterile filtration, sample prep, and venting. Choose Nylon/PTFE for precision in chemical filtration, or CA/PES for sterile filtration of buffers and biologicals. PES membrane ensures high flow rates. Trust in reliability for consistently accurate results.

- Manufacturing process certified to ISO 9001
- Sterile blister packed filters are ideal for sterile filtration
- Nonsterile syringe filters are excellent for HPLC applications.
- Biosafe according to Class VI plastics tests
- Available with Nylon, PES, PTFE, PVDF, CA, RC membrane, and GF(Glass fiber)
- Available with hydrophilic or hydrophobic PTFE
- Each filter has a female Luer-lock inlet and a male slip Luer outlet.



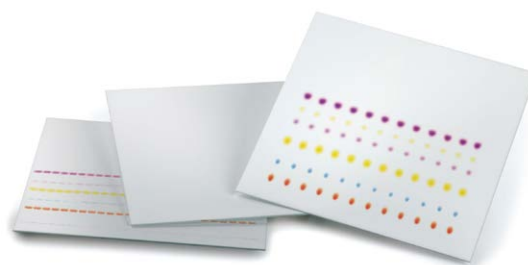
Product Line	Description	No. of Pcs per EA (Pack)	Cat. No.
VWR® Line	SYRINGE FILTER RC 30MM 0.45 MICRON NS	100	VWRI514-1240
VWR® Line	SYRINGE FILTER RC 30MM 0.22 MICRON NS	100	VWRI514-1241
VWR® Line	SYRINGE FILTER RC 13MM 0.45 MICRON NS	100	VWRI514-1243
VWR® Line	SYRINGE FILTER RC 13MM 0.22 MICRON NS	100	VWRI514-1244
VWR® Line	SYRINGE FILTER PVDF 30MM 0.45 MICRON ST	50	VWRI514-1245
VWR® Line	SYRINGE FILTER PVDF 30MM 0.45 MICRON NS	100	VWRI514-1246
VWR® Line	SYRINGE FILTER PVDF 30MM 0.22 MICRON ST	50	VWRI514-1247
VWR® Line	SYRINGE FILTER PVDF 30MM 0.22 MICRON NS	100	VWRI514-1248
VWR® Line	SYRINGE FILTER PVDF 13MM 0.45 MICRON ST	50	VWRI514-1249
VWR® Line	SYRINGE FILTER PVDF 13MM 0.45 MICRON NS	100	VWRI514-1250
VWR® Line	SYRINGE FILTER PVDF 13MM 0.22 MICRON ST	50	VWRI514-1251
VWR® Line	SYRINGE FILTER PVDF 13MM 0.22 MICRON NS	100	VWRI514-1252
VWR® Line	SYRINGE FILTER PTFE 25MM 0.45 MICRON NS	100	VWRI514-1253
VWR® Line	SYRINGE FILTER PTFE 25MM 0.22 MICRON NS	100	VWRI514-1254
VWR® Line	SYRINGE FILTER PTFE 13MM 0.45 MICRON NS	100	VWRI514-1255
VWR® Line	SYRINGE FILTER PTFE 13MM 0.22 MICRON NS	100	VWRI514-1256
VWR® Line	SYRINGE FILTER PES 30MM 0.45 MICRON ST	50	VWRI514-1257
VWR® Line	SYRINGE FILTER PES 30MM 0.45 MICRON NS	100	VWRI514-1258
VWR® Line	SYRINGE FILTER PES 30MM 0.22 MICRON ST	50	VWRI514-1259
VWR® Line	SYRINGE FILTER PES 30MM 0.22 MICRON NS	100	VWRI514-1260
VWR® Line	SYRINGE FILTER PES 25MM 0.45 MICRON ST	50	VWRI514-1261
VWR® Line	SYRINGE FILTER PES 25MM 0.45 MICRON NS	100	VWRI514-1262
VWR® Line	SYRINGE FILTER PES 25MM 0.22 MICRON ST	50	VWRI514-1263
VWR® Line	SYRINGE FILTER PES 25MM 0.22 MICRON NS	100	VWRI514-1264
VWR® Line	SYRINGE FILTER NY 30MM 0.45 MICRON ST	50	VWRI514-1265
VWR® Line	SYRINGE FILTER NY 30MM 0.22 MICRON ST	50	VWRI514-1266
VWR® Line	SYRINGE FILTER NY 25MM 0.45 MICRON NS	100	VWRI514-1267
VWR® Line	SYRINGE FILTER NY 25MM 0.22 MICRON NS	100	VWRI514-1268
VWR® Line	SYRINGE FILTER GF 25MM 1MICRON NS	100	VWRI514-1269
VWR® Line	SYRINGE FILTER GF 13MM 1MICRON NS	100	VWRI514-1270
VWR® Line	SYRINGE FILTER CA 25MM 0.45MICRON ST	50	VWRI514-1271
VWR® Line	SYRINGE FILTER CA 25MM 0.45MICRON NS	100	VWRI514-1272
VWR® Line	SYRINGE FILTER CA 25MM 0.22MICRON ST	50	VWRI514-1273
VWR® Line	SYRINGE FILTER CA 25MM 0.22MICRON NS	100	VWRI514-1274
VWR® Line	SYRINGE FILTER PTFE L 13MM 0.22MICRON NS	100	VWRI514-1275
VWR® Line	SYRINGE FILTER PTFE L 13MM 0.45MICRON NS	100	VWRI514-1276
VWR® Line	SYRINGE FILTER PTFE L 25MM 0.22MICRON NS	100	VWRI514-1277
VWR® Line	SYRINGE FILTER PTFE L 25MM 0.22MICRON NS	100	VWRI514-1278
VWR® Line	SYRINGE FILTER NY13MM 0.45 MICRON NS	100	VWRI514-1279
VWR® Line	SYRINGE FILTER NY 13MM 0.22 MICRON NS	100	VWRI514-1280
VWR® Line	SYRINGE FILTER GF 30MM 1 MICRON NS	100	VWRI514-1281

VWR® TLC PLATES

High-quality plates available in different grades and multiple formats for basic research and quality control.

The range includes

- With aluminum & glass backing
- Regular and HPTLC application
- With and without fluorescent indicator



Material Description	Pack Size	Cat. No.
PLATE TLC ALU SILICA F254 20X20CM	1 * 25 items	VWRI551-0005
PLATE TLC GLASS SILICA F254 20X20CM	1 * 25 items	VWRI551-0006
PLATE TLC GLASS SILICA HP F254 20X20CM	1 * 25 items	VWRI551-0007
PLATE HPTLC GLASS SILICA F254 10X20CM	1 * 50 items	VWRI551-0008
PLATE HPTLC GLASS SILICA HP F254 10X20C	1 * 50 items	VWRI551-0009
PLATE TLC GLASS SILICA HP F254 5X10CM	1 * 200 items	VWRI551-0012
PLATE TLC GLASS SILICA F254 5X10CM	1 * 200 items	VWRI551-0013
PLATE TLC GLASS SILICA F254 10X20CM	1 * 50 items	VWRI551-0014
PLATE TLC GLASS SILICA HP F254 10X20CM	1 * 50 items	VWRI551-0015
PLATE TLC GLASS SILICA HP 20X20CM	1 * 25 items	VWRI551-0016
PLATE TLC GLASS SILICA 20X20CM	1 * 25 items	VWRI551-0017
PLATE TLC ALU SILICA F254 5X10CM	1 * 50 items	VWRI551-0018
PLATE HPTLC GLASS SILICA F254 10X10CM	1 * 25 items	VWRI551-0019
PLATE TLC ALU SILICA F254 5X7.5CM	1 * 20 items	VWRI551-0020
PLATE TLC ALU SILICA 20X20CM	1 * 25 items	VWRI551-0021
PLATE HPTLC GLASS SILICA 10X20CM	1 * 50 items	VWRI551-0022
PLATE HPTLC GLASS SILICA HP 10X20CM	1 * 50 items	VWRI551-0023
PLATE TLC GLASS SILICA 10X20CM	1 * 50 items	VWRI551-0024
PLATE TLC GLASS SILICA HP 10X20CM	1 * 50 items	VWRI551-0025
PLATE HPTLC GLASS SILICA F254 5X5CM	1 * 100 items	VWRI551-0026
PLATE HPTLC GLASS SILICA HP F254 5X5CM	1 * 100 items	VWRI551-0027
PLATE HPTLC GLASS SILICA HP F254 10X10C	1 * 25 items	VWRI551-0028
PLATE HPTLC GLASS RP-18W F254 20X20CM	1 * 25 items	VWRI551-0029
PLATE HPTLC ALU RP-18 W F254 20X20CM	1 * 25 items	VWRI551-0030
PLATE TLC GLASS SILICA F254 5X20CM	1 * 100 items	VWRI551-0031
PLATE TLC ALU SILICA F254 10X20CM	1 * 20 items	VWRI551-0032

MOBILE PHASE SAFETY CAPS

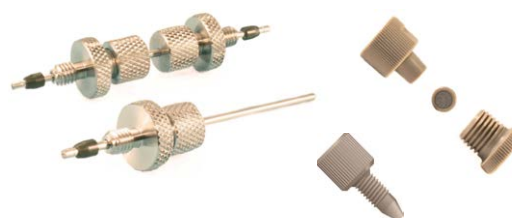
VWR® mobile phase safety caps are ideal to prevent hazardous vapors coming from reservoir bottles and prevents contaminants and dusts entering. These safety caps prevent solvent composition changes due to vaporization and ensure reproducible results.

- Available with 1, 2, 3, 4 and 5 ports
- Compatible with regular use HPLC solvent bottles



CHROMATOGRAPHY ACCESSORIES

- Guard columns
- Pre-column filters
- PEEK fingertight fittings & column connectors
- PEEK & SS tubing
- Tubing cutter
- Union, Tees & Crosses



Material Description	Pack Size	Cat. No.
SAFTEY CAP W. FILTER VALVE 1 PORT & 1FIL	Pack of 4	VWRA590-0057
SAFTEY CAP W. FILTER VALVE 2 PORT 1FIL	Pack of 4	VWRA590-0058
SAFTEY CAP W. FILTER VALVE 3 PORT & 1FIL	Pack of 4	VWRA590-0059
SAFTEY CAP W. FILTER VALVE 4 PORT & 1FIL	Pack of 4	VWRA590-0060
SAFTEY CAP W. FILTER VALVE 5 PORT & 1FIL	Pack of 4	VWRA590-0061
SAFETY CAP W. FILTER VALVE ACCESSORIES	Pack of 4	VWRA590-0062



Lab Safety Supplies

Avantor® offers the lab safety supplies you need - including absorbents, disposal containers, labeling systems, and more. Keep your lab clean and safe for everyone who works there with our comprehensive line of scientific safety equipment.





VWR® NITRILE GLOVES

The VWR® line of disposable gloves offers a variety of choices depending on your application. Whether your needs are production, laboratory, or industrial focused, we have you covered. Use the guide below to understand the features of our VWR® disposable gloves and choose the right level of protection from various material, thickness and length options.

VWR® LATEX GLOVES

Introducing VWR® Latex Ambi Power Gloves – your go-to solution for a wide range of applications. Crafted from natural latex, these single-use, ambidextrous gloves offer exceptional versatility and reliability.

Description	Pack size	Cat. No.
GLOVE LATEX AMBI POWDER-FREE XS	100	VWRA112-5397
GLOVE LATEX AMBI POWDER-FREE S	100	VWRA112-5398
GLOVE LATEX AMBI POWDER-FREE M	100	VWRA112-5399
GLOVE LATEX AMBI POWDER-FREE L	100	VWRA112-5400
GLOVE LATEX AMBI POWDER-FREE XL	100	VWRA112-5401



VWR® NITRILE GLOVES

VWR® nitrile gloves are meticulously designed for paramount protection, especially for sensitive skin. Ideal for pharmaceutical, industrial, medical and food applications, these gloves stand as the pinnacle of versatile safeguarding.



Description	Pack size	Cat. No.
GLOVE NITRILE AMBI POWDER-FREE S (6-7)	100	VWRI112-2371
GLOVE NITRILE AMBI POWDER-FREE M (7-8)	100	VWRI112-2372
GLOVE NITRILE AMBI POWDER-FREE L (8-9)	100	VWRI112-2373
GLOVE NITRILE AMBI POWDER-FREE XL	90	VWRI112-3101
GLOVE NITRILE AMBI LIGHT POWDERFREE S	100	VWRI112-2754
GLOVE NITRILE AMBI LIGHT POWDERFREE M	100	VWRI112-2755
GLOVE NITRILE AMBI LIGHT POWDERFREE L	100	VWRI112-2756
GLOVE NITRILE AMBI LIGHT POWDERFREE XL	90	VWRI112-2757
GLOVE NITRILE PF EXTRA LIGHT XS(5-6)	200	VWRI112-4193
GLOVE NITRILE PF EXTRA LIGHT S(6-7)	200	VWRI112-4194
GLOVE NITRILE PF EXTRA LIGHT M(7-8)	200	VWRI112-4195
GLOVE NITRILE PF EXTRA LIGHT L(8-9)	200	VWRI112-4196
GLOVE NITRILE PF EXTRA LIGHT XL(9-10)	200	VWRI112-4197
GLOVE NITRILE PF GREEN XS (5-6)	200	VWRI112-5154
GLOVE NITRILE PF GREEN S (6-7)	200	VWRI112-5155
GLOVE NITRILE PF GREEN M (7-8)	200	VWRI112-5156
GLOVE NITRILE PF GREEN L (8-9)	200	VWRI112-5157
GLOVE NITRILE PF GREEN XL (9-10)	180	VWRI112-5158
GLOVE NITRILE LONG S (5-6)	100	VWRI112-6045
GLOVE NITRILE LONG M (6-7)	100	VWRI112-6046
GLOVE NITRILE LONG L (8-9)	100	VWRI112-6047
GLOVE NITRILE LONG XL (9-10)	90	VWRI112-6048



DISPOSABLE PARTICLE FILTERING RESPIRATORS, FFP2

These masks provide protection against particulates, dust and aerosols. For use against non toxic to low toxicity solid and liquid aerosols.

- Exhalation valve fitted with the exclusive 'butterfly' opening-closing system
- Extra light
- Latex- and PVC-free

EN 149:2001+A1:2009

*One size fits all

Class	With valve	Size	Pk	Cat. No.
FFP2	-	U*	20	113-0645
FFP2	+	U*	10	113-0646



Gloves, Nitrile light

NITRILE GLOVES, NITRILE LIGHT

These light, ambidextrous and durable gloves are ideal for food handling, catering and kitchen work, medical and lab applications and other tasks with complex risks. These thin nitrile gloves are free from phthalates, softeners and allergenic latex proteins.

- Non sterile, powder-free
- Low thickness and textured fingertips for excellent grip
- Particularly skin friendly for users with latex allergy
- Rolled cuffs minimize the risk of tearing

EN 420, EN ISO 374-1, EN 374-2, EN 16523-1, EN 374-4, EN ISO 374-5, EN 455 1-4; ASTM D6319, ASTM F1671; MDD Class I; PPE Cat. III

Food contact approved.

* Thickness is double measured, minimum values

Model	Nitrile Light (240 mm)
Ambidextrous / hand-specific	Ambidextrous
Disposable / reusable	Disposable
Latex / latex-free	Latex-free
Powdered / powder-free	Powder-free
Cuff style	Beaded
Cuff thickness	0,12 mm*
Finger thickness	0,20 mm*
Palm thickness	0,16 mm*
EN norm	EN 420, EN ISO 374-1, EN 374-2, EN 16523-1, EN 374-4, EN ISO 374-5, EN 455 1-4
Food contact approved	+

Description	Glove size	Color	Length (mm)	Packed	Pk	Cat. No.
Nitrile Light	S	Blue	240	100/box	100	112-2754
Nitrile Light	M	Blue	240	100/box	100	112-2755
Nitrile Light	L	Blue	240	100/box	100	112-2756
Nitrile Light	XL	Blue	240	90/box	90	112-2757



VISITOR COATS, PP, DISPOSABLE, STRAIGHT WRIST

These disposable laboratory coats made from non woven PP feature a tapered collar and one breast pocket. Ideal for non critical applications.

- Serged seams
- Straight wrist
- Press stud fastening
- One pocket

Weight: 40 g/m²

Clothing size	Length (cm)	Color	Pk	Cat. No.
L	95	White	30	113-8275
XL	102	White	30	113-8276
XXL	110	White	30	113-8277



VISITOR COATS, PP, DISPOSABLE, ELASTICATED WRIST

These disposable laboratory coats made from non woven PP feature a tapered collar and two side pockets. Ideal for non critical applications.

- Bound seams
- Elasticated wrist
- Press stud fastening or zip closure (113-8271)
- Two pockets

Weight: 40 g/m²

Description	Clothing size	Length (cm)	Color	Pk	Cat. No.
Press studs	L	100	White	30	113-8272
Press studs	XL	110	White	30	113-8273
Press studs	XXL	120	White	30	113-8274
Zip closure, one size	XL	110	White	30	113-8271



FROCKS, PP, DISPOSABLE

Frocks made from PP, with tapered collar, and either press stud fastening or zip closure.

- No pockets
- Serged seam and elasticated wrists

Length for size XL: 1100 mm; 570 mm (sleeves)

Color: White or blue

Clothing size	Length (cm)	Color	Pk	Cat. No.
With press stud fastening				
XL	110	White	30	113-8269
L	110	Blue	30	113-8295
XL	110	Blue	30	113-8296
With zip closure				
XL	110	White	30	113-8270
XXL	120	White	30	113-8294



HYGIENE MASKS, 2 PLY, NON WOVEN PP

This hygiene mask, with nose bridge, is made from 2 ply, non woven PP.

- Latex-free
- Available with ear loops or ties

Density: 20 g/m² (front layer); 25 g/m² (back layer)

Hygiene masks, non woven PP, VWR®

Type	Color	Pk	Cat. No.
With ear loops	White	50	113-0713
With ties	Green	50	113-0715



LABORATORY COATS, SPP, DISPOSABLE, VWR®

This disposable coat is made of non woven, laminated, SPP fabric.

- Tailored collar
- Press stud closure and open cuffs
- Two pockets

Suitable for use in ISO Class 7 cleanroom environments.

Weight: 45 g/m²

Description	Clothing size	Color	Pk	Cat. No.
45 g/m ²	M	White	50	113-8297
45 g/m ²	L	White	50	113-8298
45 g/m ²	XL	White	50	113-8299
45 g/m ²	XXL	White	50	113-8302
45 g/m ²	3XL	White	50	113-8303
45 g/m ²	4XL	White	50	113-8304



Basic Protection SMS Lab Coats

LAB COATS, VWR® BASIC, SMS, DISPOSABLE

SMS lab coats are manufactured from a latex-free, multi-layer spunbonded-meltblown-spunbonded (SMS) fabric that offers high tensile strength, while remaining soft, comfortable and breathable.

- Tapered collar, inset sleeves, snap closure
- Knitted cuffs, three pockets
- Fluid and particulate barrier
- Light chemical splash resistance

Clothing size	Color	Pk	Cat. No.
S	White	30	113-1131
M	White	30	113-1132
L	White	30	113-1133
XL	White	30	113-1134
XXL	White	30	113-1135
S	Blue	30	113-1125
M	Blue	30	113-1126
L	Blue	30	113-1127
XL	Blue	30	113-1128
XXL	Blue	30	113-1129



BOUFFANT CAPS, PP, DETECTABLE

These detectable caps, made of non woven polypropylene, provide an effective way to cover the hair when working in hygienic environments.

- Increased detectability thanks to foil strip
- Two elastic bands for improved fit

Weight: 10 g/m²

Ø (mm)	Color	Pk	Cat. No.
530	Blue	1.000	113-1578
610	Blue	1.000	113-1579



HYGIENE MASKS, 3 PLY, NON WOVEN PP

Hygiene masks made from 3 ply, non woven PP featuring a nose bridge and ear loops or ties.

- Latex-free
- Bacterial filtration efficiency: 90%
- Particle filtration efficiency: 98,5%
- Particle size: 0,1 µm

Density: 20 g/m² (front layer); 25 g/m² (back layer); 20 g/m² (centre)

Hygiene masks, non woven PP, VWR®

Type	Color	Pk	Cat. No.
With ear loops	Green	50	113-0714
With ear loops	Blue	50	113-0716



BEARD COVERS, VWR® BASIC, SPP

VWR Basic SPP beard covers are manufactured from a strong, lightweight and breathable, spunbonded polypropylene (SPP) fabric, which protects against dirt, grime, and certain dry particulates, in non hazardous environments.

- Lightweight and breathable first-line barrier protection

This garment is ideal for less critical areas or pre-gowning entry rooms. It is tested and manufactured in an ISO certified facility, lot-controlled and validated through independent laboratory testing.

Diameter (stretched): 406 mm

Type	Color	Pk	Cat. No.
Latex-free	White	1.000	113-1464



Bouffant caps, white

BOUFFANT CAPS, PP

Bouffant caps made from non woven PP.

- Latex-free
- Elasticated band

Weight: 12 g/m²

Supplied in boxes or bags.

Ø (mm)	Color	Pk	Cat. No.
530	White	100 (Packed in bag)	113-8241
530	White	100 (Packed in box)	113-8244
530	Blue	100	113-8245
530	Green	100	113-8246
610	White	100	113-8243
610	Blue	100	113-8288
610	Green	100	113-8289



BOUFFANT CAPS WITH CLIP, PP

Bouffant caps made from non woven PP. For non critical applications.

- Latex-free
- Two elasticated bands

Weight: 12 g/m²

Ø (mm)	Color	Pk	Cat. No.
500	White	100 (Packed in bag)	113-8250
500	White	250 (Packed in box)	113-8247
500	Blue	250	113-8248
500	Green	250	113-8249
500	Red	250	113-8290
500	Yellow	250	113-8291



SLEEVE PROTECTORS, PP/PE

Sleeve protector made from non woven PP coated with PE.

- Waterproof
- With welded elasticated cuffs

Ø×L: 200×400 mm

Density: 48 g/m²

Color	Length (mm)	Pk	Cat. No.
White	400	100	113-8255



SHOE COVERS, CPE

Basic shoe covers manufactured from a low-density chlorinated polyethylene fabric, which is designed to protect against dirt, grime, and liquid splash.

- CPE is water resistant and provides good resistance against chemicals
- Economical and lint-free

Ideal for laboratory use.

*One size fits all

Size	Color	Pk	Cat. No.
U*	White	1.000	113-1491
U*	Blue	1.000	113-1492



SHOE COVERS, NON WOVEN PP WITH LATEX PATTERN

Shoe covers made from non woven PP. With latex pattern.

- Anti-skid

LxH: 460x170 mm

*One size fits all

Size	Color	Pk	Cat. No.
U*	Blue	100	113-8286



BOOT COVERS, FLUID IMPERVIOUS, VWR® MAXIMUM

VWR® Maximum boot covers are the cleanest and most durable within the entire VWR® clothing line. Made of 60g durable PE laminated PP fabric, have been designed to optimise barrier protection, cleanliness and comfort properties.

- Non skid and anti-static
- Fluid impervious, sealed seams to repel water
- Superior friction coefficient to ensure maximum traction
- Maximum skid resistance on wet and smooth surfaces

Tested and manufactured in an ISO certified facility under stringent process controls. Lot-controlled and validated through independent laboratory testing.

Length: 381 mm (U*), 419 mm (XL), 470 mm (XXL)

Size	Color	Pk	Cat. No.
XL	Blue	100 PAIR	113-1184
XXL	Black	100 PAIR	113-1185
U*	White	100 PAIR	113-1186



VWR® BASIC BOUFFANT CAPS, WITH LATEX

VWR Basic bouffant caps are manufactured from a strong, lightweight and breathable, spunbonded polypropylene (SPP) fabric, which protects against dirt, grime, and certain dry particulates, in non hazardous environments.

FEATURES

- Latex
- Lightweight and breathable first line barrier protection
- Tested and manufactured in an ISO certified facility that is lot-controlled and validated through independent laboratory testing
- This garment is ideal for less critical areas or pre-gowning entry rooms.

Description	Color	Ø	Pk	Cat. No.
With latex	White	610 mm	1	VWR1113-1459
With latex	White	530 mm	1	VWR1113-1460



SPP SHOECOVERS WITH CPE SOLE

VWR® shoe cover made of white 40g SPP coated with white (or blue or black) 80g CPE sole

- No seam under the foot
- Different colored sole (white, blue or black)

LxH: 410x170 mm

Weight: 40 g/m² (SPP), 80 g/m² (CPE sole)

5 pieces per bundle, 10 bundles per bag, 4 bags per case.

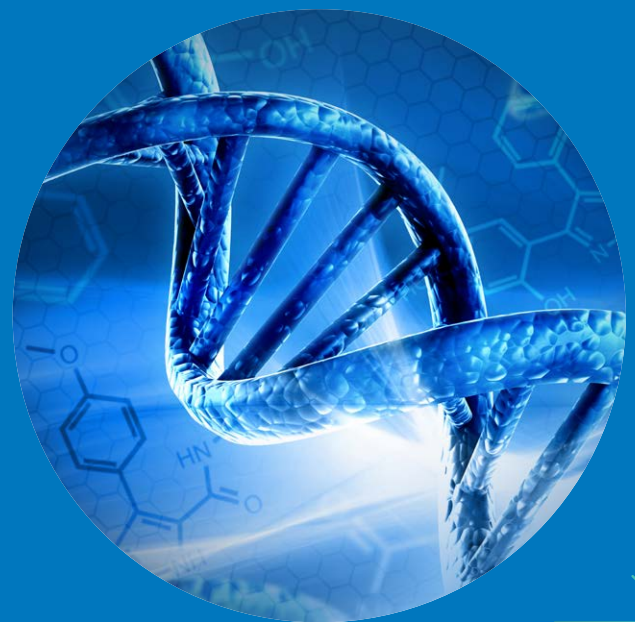
Shoe covers, SPP/CPE, VWR®

Size	Color	Pk	Cat. No.
U*	White/white	200	113-8282
U*	White/blue	200	113-8283
U*	White/black	200	113-9052



Genomics & Liquid Handling

From handling glass pipettes to aliquoting microlitre amounts or using technologies such as qPCR, next generation sequencing (NGS), and CRISPR/Cas9 genome editing, Avantor® offers a complete liquid handling & genomics solution for your lab.



Welcome to VWR® range of centrifuge tubes

Same great brand
with a new look!

VWR® CENTRIFUGE TUBES

Our cap color has changed, but the specifications
and quality are exactly the same





Centrifuge tubes

CENTRIFUGE TUBES, ULTRA-HIGH PERFORMANCE

These leakproof, conical bottom centrifuge tubes prevent breakage and leakage during high speed centrifugation, and are made of non cytotoxic, medical grade resin that allows users to easily see sample volume and color.

- Easy to read black graduations in $\pm 2\%$ increments
- Contains a large, white frosted writing area
- RNase-, DNase- and endotoxin-free
- Autoclavable at 121 °C and freezable to $-80\text{ }^{\circ}\text{C}$
- Sterilised by gamma irradiation SAL 10^{-6} (ISO 11137)

Caps are available in two styles. Flat caps are leak resistant and feature a moulded-in elastomeric sealing ring that keeps the sealed tubes completely secure. These caps are ideal for vortexing chemicals and long rocker incubations. Plug caps feature a deep sealing area offering a secure seal for extended storage.

Manufactured in a Class 100000 room environment. Manufactured under ISO 13485:2016 and ISO 9001:2015 quality management system. Meet the requirements of RoHS.

Bulk packed items are supplied with tubes, caps are packed separately. Caps must be loosely attached to tubes when autoclaving.

Capacity (ml)	Closure type	Type	Packed	Pk	Cat. No.
Centrifuge tubes, 15 ml, 17000xg, flat cap with sealing ring					
15	Flat cap	Non sterile	25/rack, 2 racks/pack, 10 packs/case	500	525-1081
15	Flat cap	Non sterile	50/bag, 10 bags/case	500	525-1082
15	Flat cap	Non sterile	Bulk (tubes and caps in separate bags)	500	525-1083
15	Flat cap	Sterile	25/rack, 2 racks/pack, 10 packs/case	500	525-1084
15	Flat cap	Sterile	50/bag, 10 bags/case	500	525-1085
Centrifuge tubes, 15 ml, 20000xg, flat cap with sealing ring					
15	Flat cap	Sterile	25/rack, 2 racks/pack, 10 packs/case	500	525-1091
15	Flat cap	Sterile	50/bag, 10 bags/case	500	525-1092
Centrifuge tubes, 15 ml, 17000xg, plug cap					
15	Plug type cap	Non sterile	25/rack, 2 racks/pack, 10 packs/case	500	525-1086
15	Plug type cap	Non sterile	50/bag, 10 bags/case	500	525-1087
15	Plug type cap	Non sterile	Bulk	500	525-1088
15	Plug type cap	Sterile	25/rack, 2 racks/pack, 10 packs/case	500	525-1089
15	Plug type cap	Sterile	50/bag, 10 bags/case	500	525-1090
Centrifuge tubes, 50 ml, 20000xg, plug cap					
50	Plug type cap	Non sterile	25/rack, 2 racks/pack, 10 packs/case	500	525-1101
50	Plug type cap	Non sterile	50/bag, 10 bags/case	500	525-1103
50	Plug type cap	Non sterile	Bulk	500	525-1105
50	Plug type cap	Sterile	25/rack, 2 racks/pack, 10 packs/case	500	525-1111
50	Plug type cap	Sterile	50/bag, 10 bags/case	500	525-1113
Centrifuge tubes, 50 ml, 20000xg, flat cap with sealing ring					
50	Flat cap	Non sterile	25/rack, 2 racks/pack, 10 packs/case	500	525-1098
50	Flat cap	Non sterile	50/bag, 10 bags/case	500	525-1099
50	Flat cap	Non sterile	Bulk	500	525-1100
50	Flat cap	Sterile	25/rack, 2 racks/pack, 10 packs/case	500	525-1107
50	Flat cap	Sterile	50/bag, 10 bags/case	500	525-1109
Centrifuge tubes, 50 ml, 10000xg, freestanding, flat cap with sealing ring					
50	Flat cap	Non sterile	Bulk	500	525-1096
50	Flat cap	Sterile	50/bag, 10 bags/case	500	525-1097
Centrifuge tubes, 15 ml, 3000xg, PS, with moulded graduations and flat caps					
15	Flat cap	Non sterile	Bulk	1.000	525-1095
15	Flat cap	Sterile	25/rack, 2 racks/pack, 10 packs/case	500	525-1093
15	Flat cap	Sterile	50/bag, 10 bags/case	500	525-1094



CENTRIFUGE TUBES

PS, clear, conical, with flat cap with integral sealing.

- Gamma irradiated
- Longer length screw caps with sealing ring prevent any leakage
- Engraved graduations at the conical bottom of each tube
- Graduations and writing area are chloroform-resistant

Capacity (ml)	Closure type	Version	RCF max. (xg)	Packed	Pk	Cat. No.
15	Screw cap	non sterile	3000	Bulk, 500/case	500	525-0638
15	Screw cap	sterile	3000	25/rack, 20 packs/case	500	525-0639
15	Screw cap	sterile	3000	50/bag, 10 bags/case	500	525-0640



Centrifuge tubes

CENTRIFUGE TUBES, ULTRA-HIGH PERFORMANCE, LIGHT-SENSITIVE

These leakproof centrifuge tubes are manufactured from dark amber PP, and provide protection for light-sensitive samples by blocking UV lighting.

- Easy to read black graduations in $\pm 2\%$ increments
- Contains a large, white frosted writing area
- RNase-, DNase- and endotoxin-free
- Autoclavable at 121 °C and freezable to -80 °C
- Can be centrifuged up to 12500 xg
- Sterilised by gamma irradiation SAL 10⁻⁶ (ISO 11137)

These sterile tubes feature a printed labelling area for quick and convenient sample identification. Green high density polyethylene caps are included. Tubes are available in 15 or 50 ml sizes, and are offered in a variety of packaging formats. All tubes and caps are autoclavable.

Manufactured in a Class 100000 room environment. Manufactured under ISO 13485:2016 and ISO 9001:2015 quality management system. Meet the requirements of RoHS.

Bulk packed items are supplied with tubes, caps are packed separately.

Capacity (ml)	Closure type	Version	Color	Packed	Pk	Cat. No.
15	Plug type cap	Non sterile	Amber	Bulk	500	525-1115
15	Plug type cap	Sterile	Amber	25/rack, 2 racks/pack, 10 packs/ case	500	525-1116
15	Plug type cap	Sterile	Amber	50/bag, 10 bags/case	500	525-1117
50	Plug type cap	Non sterile	Amber	Bulk	500	525-1118
50	Plug type cap	Sterile	Amber	25/rack, 2 racks/pack, 10 packs/ case	500	525-1119
50	Plug type cap	Sterile	Amber	50/bag, 10 bags/case	500	525-1120



RACKS FOR 15 OR 50 ML TUBES

PP, with clear lid.

- Deep grid wells securely hold tubes upright
- Locate tubes easily with keyed lid, imprinted grid and first tube orientation
- View tube storage through clear lid and transparent sides

Robust, rugged construction for repeated storage. Snap in one of the two included grids, either 15 or 50 ml.

Color	WxDxH (mm)	Pk	Cat. No.
Purple	132x132x129	5	211-0370



CENTRIFUGE TUBES

PP, conical, with white HDPE flat cap with integral sealing or plug style cap with deep sealing area.

- Certified non cytotoxic, nuclease-free and pyrogen-free
- Caps available in two styles: Flat cap with integral sealing with a smooth surface for additional labelling options, or plug style cap with deep sealing area for a secure seal when using shakers and horizontal incubators
- Engraved graduation at the conical bottom of each tube
- Graduations and writing area are chloroform-resistant
- Longer length screw caps with sealing ring prevent any leakage
- Can be used for storing and freezing samples at temperatures down to -80°C
- Sustainable design based on virgin resins

These disposable conical bottom and free-standing tubes are extremely versatile, and can be used for routine tasks as well as high speed centrifuging. Rack-packed tubes are packaged in freezable, recyclable cardboard racks. Tubes are sterilised by gamma irradiation. Tubes and caps are autoclavable and freezable.

Capacity (ml)	Closure type	Version	Type	RCF max. (xg)	Packed	Pk	Cat. No.
Conical bottom							
15	Screw cap	sterile	Flat cap with integral sealing	12500	50/bag, 10 bags/case	500	525-0604
15	Screw cap	sterile	Plug style cap with deep sealing area	12500	50/bag, 10 bags/case	500	525-0605
15	Screw cap	sterile	Flat cap with integral sealing	12500	50/rack, 10 racks/case	500	525-0606
15	Screw cap	sterile	Plug style cap with deep sealing area	12500	50/rack, 10 racks/case	500	525-0607
50	Screw cap	sterile	Flat cap with integral sealing	12500	50/bag, 10 bags/case	500	525-0610
50	Screw cap	sterile	Plug style cap with deep sealing area	12500	50/bag, 10 bags/case	500	525-0612
50	Screw cap	sterile	Flat cap with integral sealing	12500	25/rack, 20 racks/case	500	525-0608
50	Screw cap	sterile	Plug style cap with deep sealing area	12500	25/rack, 20 racks/case	500	525-0609
Freestanding							
50	Screw cap	sterile	Flat cap with integral sealing	12500	50/bag, 10 bags/case	500	525-0611



CENTRIFUGE TUBES, METAL-FREE, WITH SCREW CAP

PP, high grade gamma resistance, conical, with HDPE flat cap.

- Easy-to-read black graduations are accurate to $\pm 2\%$, with 0,5 ml increments (15 ml) or 2,5 ml increments (50 ml)
- With a large unerasable frosted white printed writing area
- Both the graduations and writing areas are chloroform-resistant
- Engraved graduation at the conical bottom of each tube
- Autoclavable at 121 °C and freezable to -80 °C
- Leakproof
- Sustainable design based on virgin resins

Ideal for environmental uses such as water analysis and other applications where tubes have the potential to contaminate samples. Tubes are RNase-free, DNase-free, and non pyrogenic.

TSE/BSE-free Certification.

Racked tubes are packaged in environmentally responsible (fully recyclable) chipboard racks. Bagged tubes are packaged in durable and re-sealable (zip closure) bags. Inner packaging is individually labelled for lot-to-lot traceability. All tubes are packaged with caps attached and sterilized with gamma irradiation.

Capacity (ml)	Closure type	Version	RCF max. (xg)	Packed	Pk	Cat. No.
50	Screw cap	sterile	12500	25/Rack, 2 Racks/Bag, 10 Bags/Case	500	525-0632
15	Screw cap	sterile	12500	Bulk, 500/case	500	525-0629
15	Screw cap	sterile	12500	25/Rack, 2 Racks/Bag, 10 Bags/Case	500	525-0630
50	Screw cap	sterile	12500	Bulk, 500/case	500	525-0631

RACKS FOR 15 ML CONICAL BOTTOM CENTRIFUGE TUBES

PP.

- Autoclavable at 121 °C and freezable to -80 °C
- Angular at one end to stack and handle easily
- DNase-/RNase-free and non pyrogenic

Suitable for VWR® centrifuge tubes with conical bottom. Each well has an identification number (1 to 25).

Sterilised by gamma irradiation SAL 10^{-6} .

Assorted color pack includes one blue, green, orange, red and yellow rack. 5 racks per bag. For larger orders: 5 racks/bag and 10 bags per case.



For tubes (ml)	No. of holes	WxDxH (mm)	Color	Pk	Cat. No.
15	25	154x128x32	Natural	5	525-0613
15	25	154x128x32	White	5	525-0614
15	25	154x128x32	Yellow	5	525-0615
15	25	154x128x32	Orange	5	525-0616
15	25	154x128x32	Red	5	525-0617
15	25	154x128x32	Blue	5	525-0618
15	25	154x128x32	Green	5	525-0619
15	25	154x128x32	Assorted colors	5	525-0620



VWR® MICRO CENTRIFUGE TUBE WITH SOCKET SCREW-CAP

Description: Screw-Cap Micro Centrifuge Tubes with silicone O-ring, Sterile/Non-Sterile

Purpose: Used for sample storage, operation and centrifugation

Materials

Tube: PP (Polypropylene), Compliance with USP Class VI

Cap: PP (Polypropylene), Compliance with USP Class VI

Insert: PP (Polypropylene), Compliance with USP Class VI

FEATURES

- Made from high grade gamma resistance polypropylene
- Autoclavable at 121 °C and freezable to -80 °C, and excellent for frozen storage
- Caps accept color coded inserts, and easily write on the forested side of insert
- O-rings are made from silicone to insure a leakproof seal
- Meet the requirements of BSE/TSE
- Latex Statement: This product is latex free
- Non-pyrogenic: The acceptance level for product is 0.05 EU/ml. (Tachypleus Amebocyte Lysate (TAL) Clot-gel test)
- Meet the requirements of RoHS
- Assorted pack contains 5 colors of red, orange, yellow, green and blue
- DNase/RNase-free
- Sterilized by irradiation SAL10⁻⁶ (ISO11137)
- Shelf life: 3 years after month of production
- Manufactured in a Class 100,000 cleanroom environment
- Manufactured under ISO13485 and ISO9001 quality management system

VWR® Micro Centrifuge Tube with Socket Screw-Cap

Capacity (ml)	Maximum RCF	Tube Shape	Tube Color	Graduation	Sterilisation	Cap Color	Sterilization	Packaging Configuration	VWR® EU EAN. No	VWR® NA Cat. No.
0.5ml	20,000g	Conical-Bottom	Natural	No	Screw Cap	Green	No	Tube:500/PK, Cap:500/PK, 5000/CS	525-1231	89004-280
0.5ml	20,000g	Conical-Bottom	Natural	No	Screw Cap	Green	Yes	50/Bag, 10 Bags/PK, 5000/CS		89004-282
0.5ml	20,000g	Freestanding	Natural	No	Screw Cap	Green	No	Tube:500/PK, Cap:500/PK, 5000/CS	525-1233	89004-284
0.5ml	20,000g	Freestanding	Natural	No	Screw Cap	Green	Yes	50/Bag, 10 Bags/PK, 5000/CS		89004-286
0.5ml	20,000g	Conical-Bottom	Natural	No	Loop Cap	Natural	No	500/PK, 5000/CS	525-1234	89004-312
0.5ml	20,000g	Freestanding	Natural	No	Loop Cap	Natural	No	500/PK, 5000/CS	525-1235	89004-316
1.5ml	20,000g	Conical-Bottom	Natural	Yes	Screw Cap	Green	No	Tube:500/PK, Cap:500/PK, 5000/CS	525-1236	89004-288
1.5ml	20,000g	Conical-Bottom	Natural	Yes	Screw Cap	Green	Yes	50/Bag, 10 Bags/PK, 5000/CS		89004-290
1.5ml	20,000g	Freestanding	Natural	Yes	Screw Cap	Green	No	Tube:500/PK, Cap:500/PK, 5000/CS	525-1237	89004-292
1.5ml	20,000g	Freestanding	Natural	Yes	Screw Cap	Green	Yes	50/Bag, 10 Bags/PK, 5000/CS		89004-294

VWR® Micro Centrifuge Tube with Socket Screw-Cap

Capacity (ml)	Maximum RCF	Tube Shape	Tube Color	Graduation	Sterilisation	Cap Color	Sterilization	Packaging Configuration	VWR® EU EAN. No	VWR® NA Cat. No.
1.5ml	20,000g	Conical-Bottom	Natural	Yes	Loop Cap	Natural	No	500/PK, 5000/CS	525-1238	89004-304
1.5ml	20,000g	Freestanding	Natural	Yes	Loop Cap	Natural	No	500/PK, 5000/CS	525-1239	89004-320
2.0ml	20,000g	Conical-Bottom	Natural	Yes	Screw Cap	Green	No	Tube:500/PK, Cap:500/PK, 5000/CS	525-1240	89004-296
2.0ml	20,000g	Conical-Bottom	Natural	Yes	Screw Cap	Green	Yes	50/Bag, 10 Bags/PK, 5000/CS		89004-298
2.0ml	20,000g	Freestanding	Natural	Yes	Screw Cap	Green	No	Tube:500/PK, Cap:500/PK, 5000/CS	525-1241	89004-300
2.0ml	20,000g	Freestanding	Natural	Yes	Screw Cap	Green	Yes	50/Bag, 10 Bags/PK, 5000/CS		89004-302
2.0ml	20,000g	Freestanding	Natural	Yes	Loop Cap	Natural	No	500/PK, 5000/CS	525-1243	89004-308
2.0ml	20,000g	Conical-Bottom	Natural	Yes	Loop Cap	Natural	No	500/PK, 5000/CS	525-1244	89004-324
MCT Cap					Screw Cap	Yellow	Yes	500/PK, 5000/CS		89004-350
MCT Cap					Screw Cap	Orange	Yes	500/PK, 5000/CS		89004-352
MCT Cap					Screw Cap	Red	Yes	500/PK, 5000/CS		89004-354
MCT Cap					Screw Cap	Purple	Yes	500/PK, 5000/CS		89004-356
MCT Cap					Screw Cap	Assorted	Yes	500/PK, 5000/CS		89004-362
MCT Cap					Screw Cap	Natural	No	500/PK, 5000/CS		10025-758
MCT Cap					Screw Cap	White	No	500/PK, 5000/CS		10025-760
MCT Cap					Screw Ca	Blue	No	500/PK, 5000/CS		10025-762
MCT Cap					Screw Cap	Green	No	500/PK, 5000/CS		10025-764
MCT Insert						Yellow	No	500/Box, 5000/CS		76318-710
MCT Insert						Orange	No	500/Box, 5000/CS		76318-712
MCT Insert						Red	No	500/Box, 5000/CS		76318-714
MCT Insert						Assorted	No	500/Box, 5000/CS		76318-720
MCT Insert						White	No	500/Box, 5000/CS	525-0657	10025-766
MCT Insert						Blue	No	500/Box, 5000/CS	525-0658	10025-768
MCT Insert						Green	No	500/Box, 5000/CS	525-0659	10025-770



VWR® MICRO CENTRIFUGE TUBE WITH FLAT SCREW-CAP

Description: Screw-Cap Micro Centrifuge Tubes with silicone O-ring, Sterile/Non-Sterile

Purpose: Used for sample storage, operation and centrifugation

Materials

Tube: PP (Polypropylene), Compliance with USP Class VI

Cap: PP (Polypropylene), Compliance with USP Class VI

FEATURES

- Made from high grade gamma resistance polypropylene
- Autoclavable at 121 °C and freezable to -80 °C, and excellent for frozen storage
- Engraved graduation ensure accuracy
- O-rings are made from silicone to insure a leakproof seal
- Meet the requirements of BSE/TSE
- Latex Statement: This product is latex free
- Non-pyrogenic: The acceptance level for product is 0.05 EU/ml. (Tachypleus Amebocyte Lysate (TAL) Clot-gel test)
- Meet the requirements of RoHS
- DNase/RNase-free
- Assorted pack contains 5 colors of red, orange, yellow, green and blue
- Sterilized by irradiation SAL10⁻⁶ (ISO11137)
- Shelf life: 3 years after month of production
- Manufactured in a Class 100,000 cleanroom environment
- Manufactured under ISO13485 and ISO9001 quality management system

VWR® Micro Centrifuge Tube with Flat Screw-Cap

Capacity (ml)	Maximum RCF	Tube Shape	Tube Color	Graduation	Sterilization	Cap Color	Sterilisation	Packaging Configuration	VWR® EU EAN. No.	VWR® NA Cat. No.
0.5ml	20,000g	Conical-Bottom	Natural	Yes			No	500/PK, 5000/CS	525-1137	16466-034
0.5ml	20,000g	Conical-Bottom	Natural	Yes	Flat	Natural	No	Tube:500/PK, Cap:500/PK, 5000/CS	525-1144	16466-056
0.5ml	20,000g	Conical-Bottom	Natural	Yes	Flat	Natural	Yes	50/Bag, 10 Bags/PK, 5000/CS	525-1140	16466-054
0.5ml	20,000g	Freestanding	Natural	Yes			No	500/PK, 5000/CS	525-1147	16466-036
0.5ml	20,000g	Freestanding	Natural	Yes	Flat	Natural	No	Tube:500/PK, Cap:500/PK, 5000/CS	525-1157	16466-052
0.5ml	20,000g	Freestanding	Natural	Yes	Flat	Natural	Yes	50/Bag, 10 Bags/PK, 5000/CS	525-1155	16466-050

VWR® Micro Centrifuge Tube with Flat Screw-Cap

Capacity (ml)	Maximum RCF	Tube Shape	Tube Color	Graduation	Sterilization	Cap Color	Sterilisation	Packaging Configuration	VWR® EU EAN. No.	VWR® NA Cat. No.
1.5ml	20,000g	Conical-Bottom	Natural	Yes			No	500/PK, 5000/CS	525-1138	16466-030
1.5ml	20,000g	Conical-Bottom	Natural	Yes	Flat	Natural	No	Tube:500/PK, Cap:500/PK, 5000/CS	525-1145	16466-064
1.5ml	20,000g	Conical-Bottom	Natural	Yes	Flat	Natural	Yes	50/Bag, 10 Bags/PK, 5000/CS	525-1141	16466-062
1.5ml	20,000g	Freestanding	Natural	Yes			No	500/PK, 5000/CS	525-1148	16466-038
1.5ml	20,000g	Freestanding	Natural	Yes	Flat	Natural	No	Tube:500/PK, Cap:500/PK, 5000/CS	525-1158	16466-048
1.5ml	20,000g	Freestanding	Natural	Yes	Flat	Natural	Yes	50/Bag, 10 Bags/PK, 5000/CS	525-1159	16466-046
2.0ml	20,000g	Conical-Bottom	Natural	Yes			No	500/PK, 5000/CS	525-1139	16466-040
2.0ml	20,000g	Conical-Bottom	Natural	Yes	Flat	Natural	No	Tube:500/PK, Cap:500/PK, 5000/CS	525-1146	16466-044
2.0ml	20,000g	Conical-Bottom	Natural	Yes	Flat	Natural	Yes	50/Bag, 10 Bags/PK, 5000/CS	525-1143	16466-042
2.0ml	20,000g	Freestanding	Natural	Yes			No	500/PK, 5000/CS	525-1149	16466-032
2.0ml	20,000g	Freestanding	Natural	Yes	Flat	Natural	No	Tube:500/PK, Cap:500/PK, 5000/CS	525-1160	16466-060
2.0ml	20,000g	Freestanding	Natural	Yes	Flat	Natural	Yes	50/Bag, 10 Bags/PK, 5000/CS	525-1156	16466-058
MCT Cap					Flat	Assorted	No	100/Bag/Color, 5 Bags/PK, 5000/CS	525-1187	16466-084
MCT Cap					Flat	Blue	No	500/PK, 5000/CS	525-1180	16466-070
MCT Cap					Flat	Natural	No	500/PK, 5000/CS	525-1186	16466-082
MCT Cap					Flat	Green	No	500/PK, 5000/CS	525-1179	16466-068
MCT Cap					Flat	Orange	No	500/PK, 5000/CS	525-1183	16466-076
MCT Cap					Flat	Purple	No	500/PK, 5000/CS	525-1181	16466-072
MCT Cap					Flat	Red	No	500/PK, 5000/CS	525-1182	16466-074
MCT Cap					Flat	White	No	500/PK, 5000/CS	525-1185	16466-080
MCT Cap					Flat	Yellow	No	500/PK, 5000/CS	525-1184	16466-078
MCT Cap					Flat	Natural	Yes	500/PK, 5000/CS	525-1564	



VWR® MICROCENTRIFUGE TUBES WITH CAP, POLYPROPYLENE

Description Micro Centrifuge Tubes with caps, Conical-Bottom, Sterile Non Sterile

Purpose: Used for sample storage, operation and centrifugation

Materials

Tube/Cap: PP (Polypropylene)

FEATURES

- Made from high grade gamma resistance polypropylene
- Available with 3 volumes of 0.5, 1.5 and 2.0ml
- Autoclavable at 121 °C and freezable to -80 °C
- Engraved graduation ensure accuracy
- Flat and frost caps surface together with smooth and frosted body surface
- Provide easy and legible mark area
- Tubes can be centrifuged to 25,000g RCF
- DNase/RNase-free and Non-pyrogenic
- Sterilized by irradiation SAL10-6 (ISO11137)
- Shelf life: 3 years after month of production
- Manufactured in a Class 100,000 cleanroom environment
- Manufactured under ISO13485 and ISO9001 quality management system

VWR® Microcentrifuge Tubes with Cap, Polypropylene

Capacity ml	Maximum RCF	Tube Color	Tube Shape	Graduation	Sterilisation	Packaging Configuration	Cat. No.
0.5ml	25,000g	Blue	Conical-Bottom	Yes	No	1000/PK,10000/CS	10026-086
0.5ml	25,000g	Green	Conical-Bottom	Yes	No	1000/PK,10000/CS	10025-714
0.5ml	25,000g	Natural	Conical-Bottom	Yes	No	1000/PK,10000/CS	10025-716
0.5ml	25,000g	Natural	Conical-Bottom	Yes	No	500/PK,5000/CS	10025-718
1.5ml	25,000g	Blue	Conical-Bottom	Yes	No	500/PK,5000/CS	10025-720
1.5ml	25,000g	Green	Conical-Bottom	Yes	No	500/PK,5000/CS	10025-722
1.5ml	25,000g	Natural	Conical-Bottom	Yes	No	500/PK,5000/CS	10025-724
1.5ml	25,000g	Natural	Conical-Bottom	Yes	Yes	500/PK,5000/CS	10025-726
1.5ml	25,000g	Natural	Conical-Bottom	Yes	No	250/PK,2500/CS	10025-728
1.5ml	25,000g	Blue	Conical-Bottom	Yes	No	250/PK,2500/CS	10025-730
1.5ml	25,000g	Green	Conical-Bottom	Yes	No	250/PK,2500/CS	10025-732
2.0ml	25,000g	Blue	Conical-Bottom	Yes	No	400/PK,4000/CS	10025-734
2.0ml	25,000g	Green	Conical-Bottom	Yes	No	400/PK,4000/CS	10025-736
2.0ml	25,000g	Natural	Conical-Bottom	Yes	No	400/PK,4000/CS	10025-738
2.0ml	25,000g	Natural	Conical-Bottom	Yes	No	500/PK,5000/CS	10025-740



VWR® DISPOSABLE MICROCENTRIFUGE TUBES

Description: Micro Centrifuge Tubes with caps, Conical-Bottom, Sterile/Non-Sterile

Purpose: Used for sample storage, operation and centrifugation

Materials

Tube/Cap: PP (Polypropylene), Compliance with USP Class VI

FEATURES

- Made from high grade gamma resistance polypropylene
- Autoclavable at 121 °C and freezable to -80 °C
- Engraved graduation ensure accuracy
- Flat and frost caps surface together with smooth and frosted body surface
- Provide easy and legible mark area
- Meet the requirements of BSE/TSE
- Latex Statement: This product is latex free
- Non-pyrogenic: The acceptance level for product is 0.05 EU/ml. (Tachypleus Amebocyte Lysate (TAL) Clot-gel test)
- Meet the requirements of RoHS
- DNase/RNase-free
- Assorted pack contains 5 colors of red, orange, yellow, green and blue
- Sterilized by irradiation SAL10-6 (ISO11137)
- Shelf life: 3 years after month of production
- Manufactured in a Class 100,000 cleanroom environment
- Manufactured under ISO13485 and ISO9001 quality management system

VWR® Disposable Microcentrifuge Tubes

Capacity (ml)	Maximum RCF	Tube Shape	Tube Colors	Graduation	Sterilisation	Packaging Configuration	VWR® EU EAN. No.	VWR® NA Cat. No.
0.5 ml	20,000 g	Conical-Bottom	Natural	Yes	No	1000/PK, 10000/CS	525-1220	89000-010
0.5 ml	20,000 g	Conical-Bottom	Amber	Yes	No	1000/PK, 10000/CS	525-1246	89000-012
0.5 ml	20,000 g	Conical-Bottom	Yellow	Yes	No	1000/PK, 10000/CS	525-1247	89000-014
0.5 ml	20,000 g	Conical-Bottom	Orange	Yes	No	1000/PK, 10000/CS	525-1248	89000-016
0.5 ml	20,000 g	Conical-Bottom	Red	Yes	No	1000/PK, 10000/CS	525-1221	89000-018
0.5 ml	20,000 g	Conical-Bottom	Purple	Yes	No	1000/PK, 10000/CS	525-1249	89000-020
0.5 ml	20,000 g	Conical-Bottom	Blue	Yes	No	1000/PK, 10000/CS	525-1250	89000-022
0.5 ml	20,000 g	Conical-Bottom	Green	Yes	No	1000/PK, 10000/CS	525-1251	89000-024
0.5 ml	20,000 g	Conical-Bottom	Assorted	Yes	No	200/Bag/Color, 1000/PK, 10000/CS	525-1222	89000-026
1.5 ml	20,000 g	Conical-Bottom	Natural	Yes	No	500/PK, 5000/CS	525-1126	89000-028
1.5 ml	20,000 g	Conical-Bottom	Amber	Yes	No	500/PK, 5000/CS	525-1223	89000-030
1.5 ml	20,000 g	Conical-Bottom	Yellow	Yes	No	500/PK, 5000/CS	525-1224	89000-032
1.5 ml	20,000 g	Conical-Bottom	Orange	Yes	No	500/PK, 5000/CS	525-1225	89000-034
1.5 ml	20,000 g	Conical-Bottom	Red	Yes	No	500/PK, 5000/CS	525-1226	89000-036
1.5 ml	20,000 g	Conical-Bottom	Purple	Yes	No	500/PK, 5000/CS	525-1227	89000-038
1.5 ml	20,000 g	Conical-Bottom	Blue	Yes	No	500/PK, 5000/CS	525-1228	89000-040
1.5 ml	20,000 g	Conical-Bottom	Green	Yes	No	500/PK, 5000/CS	525-1229	89000-042
1.5 ml	20,000 g	Conical-Bottom	Assorted	Yes	No	100/Bag/Color, 500/PK, 5000/CS	525-1230	89000-044
2.0 ml	20,000 g	Conical-Bottom	Amber	Yes	No	500/PK, 5000/CS	525-1127	20170-084
2.0 ml	20,000 g	Conical-Bottom	Yellow	Yes	No	500/PK, 5000/CS	525-1128	20170-086
2.0 ml	20,000 g	Conical-Bottom	Orange	Yes	No	500/PK, 5000/CS	525-1129	20170-088
2.0 ml	20,000 g	Conical-Bottom	Red	Yes	No	500/PK, 5000/CS	525-1130	20170-090
2.0 ml	20,000 g	Conical-Bottom	Purple	Yes	No	500/PK, 5000/CS	525-1131	20170-092
2.0 ml	20,000 g	Conical-Bottom	Blue	Yes	No	500/PK, 5000/CS	525-1133	20170-094
2.0 ml	20,000 g	Conical-Bottom	Green	Yes	No	500/PK, 5000/CS	525-1134	20170-096
2.0 ml	20,000 g	Conical-Bottom	Assorted	Yes	No	100/Bag/Color, 500/PK, 5000/CS	525-1135	20170-098
2.0 ml	20,000 g	Conical-Bottom	Natural	Yes	No	500/PK, 5000/CS	525-1136	20170-170
1.5 ml	20,000 g	Conical-Bottom	Natural	Yes	Yes	50/Bag, 10 Bags/PK, 5000/CS	525-1178	



VWR SCREW CAP MICROCENTRIFUGE TUBES WITH CAP, POLYPROPYLENE

Description: Micro Centrifuge Tubes with caps, Conical-Bottom, Sterile/Non-Sterile

Purpose: Used for sample storage, operation and centrifugation

Materials

Tube/Cap/Insert: PP (Polypropylene)

FEATURES

- Made from high grade gamma resistance polypropylene
- Available with 3 volumes of 0.5, 1.5 and 2.0 ml
- Caps accept color coded inserts, and easily write on the forested side of insert
- O-rings are made from silicone to insure a leakproof seal
- 1.5 ml 2.0 ml MCT provide easy and legible forested area
- Autoclavable at 121 °C and freezable to -80 °C, and excellent for frozen storage
- Tubes can be centrifuged to 20,000g RCF
- DNase/RNase-free and Non-pyrogenic
- Sterilized by irradiation SAL10-6 (ISO11137)
- Shelf life: 3 years after month of production
- Manufactured in a Class 100,000 cleanroom environment
- Manufactured under ISO13485 and ISO9001 quality management system

VWR® Screw Cap Microcentrifuge Tubes with Cap, Polypropylene

Capacity ml	Maximum RCF	Tube Color	Tube Shape	Graduation	Sterilisation	Packaging Configuration	VWR® EU EAN No	VWR® NA Cat. No.
0.5ml	20,000g	Clear	Conical-Bottom	No	No	500/PK,5000/CS	525-0641	10025-742
0.5ml	20,000g	Clear	Conical-Bottom	No	Yes	500/PK,5000/CS	525-0642	10025-744
0.5ml	20,000g	Clear	Freestanding	No	No	500/PK,5000/CS	525-0643	10026-096
0.5ml	20,000g	Clear	Freestanding	No	Yes	500/PK,5000/CS	525-0644	10026-098
1.5ml	20,000g	Clear	Conical-Bottom	Yes	No	500/PK,5000/CS	525-0645	10026-100
1.5ml	20,000g	Clear	Conical-Bottom	Yes	Yes	500/PK,5000/CS	525-0646	10026-102
1.5ml	20,000g	Clear	Freestanding	No	No	500/PK,5000/CS	525-0647	10025-746
1.5ml	20,000g	Clear	Freestanding	No	Yes	500/PK,5000/CS	525-0648	10025-748
2.0ml	20,000g	Clear	Conical-Bottom	Yes	No	500/PK,5000/CS	525-0649	10025-750
2.0ml	20,000g	Clear	Conical-Bottom	Yes	Yes	500/PK,5000/CS	525-0650	10025-752
2.0ml	20,000g	Clear	Freestanding	Yes	No	500/PK,5000/CS	525-0651	10025-754
2.0ml	20,000g	Clear	Freestanding	Yes	Yes	500/PK,5000/CS	525-0652	10025-756
MCT Cap		Natural			No	500/PK,5000/CS	525-0653	10025-758
MCT Cap		White			No	500/PK,5000/CS	525-0654	10025-760
MCT Cap		Blue			No	500/PK,5000/CS	525-0655	10025-762
MCT Cap		Green			No	500/PK,5000/CS	525-0656	10025-764
MCT Insert		White			No	500/PK,5000/CS	525-0657	10025-766
MCT Insert		Blue			No	500/PK,5000/CS	525-0658	10025-768
MCT Insert		Green			No	500/PK,5000/CS	525-0659	10025-770



VWR® HIGH PERFORMANCE MICROCENTRIFUGE TUBES, POLYPROPYLENE

Description: Micro Centrifuge Tubes with caps, Conical-Bottom, Non-Sterile

Purpose: Used for sample storage, operation and centrifugation

Materials

Tube/Cap: PP (Polypropylene), Compliance with USP Class VI

FEATURES

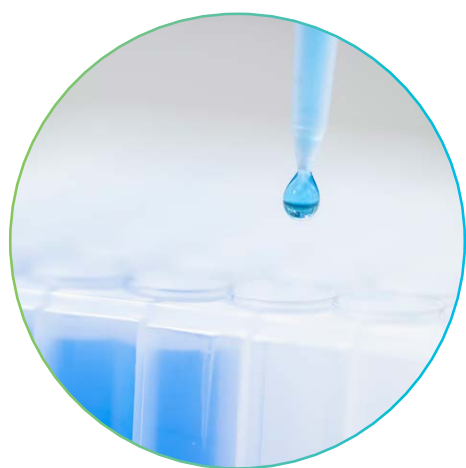
- Made from high grade gamma resistance polypropylene
- Autoclavable at 121 °C and freezable to -80 °C
- Engraved graduation ensure accuracy
- Flat and frost caps surface together with smooth and frosted body surface
- Provide easy and legible mark area
- Meet the requirements of BSE/TSE
- Latex Statement: This product is latex free
- Non-pyrogenic: The acceptance level for product is 0.05 EU/ml. (Tachypleus Amebocyte Lysate (TAL) Clot-gel test)
- Meet the requirements of RoHS
- DNase/RNase-free
- Assorted pack contains 5 colors of red, orange, yellow, green and blue
- Manufactured in a Class 100,000 cleanroom environment
- Manufactured under ISO13485 and ISO9001 quality management system

VWR® High Performance Microcentrifuge Tubes, Polypropylene

Capacity (ml)	Maximum RCF	Tube Shape	Tube Color	Graduation	Sterilisation	Packaging Configuration	VWR® EU EAN. No.	VWR® NA Cat. No.
0.5 ml	35,000 g	Conical-Bottom	Assorted	Yes	No	200/Bag/Color, 1000/PK, 5000/CS	525-1170	20170-306
0.5 ml	35,000 g	Conical-Bottom	Blue	Yes	No	1000/PK, 10000/CS	525-1171	20170-303
0.5 ml	35,000 g	Conical-Bottom	Natural	Yes	No	1000/PK, 10000/CS	525-1172	20170-293
0.5 ml	35,000 g	Conical-Bottom	Orange	Yes	No	1000/PK, 10000/CS	525-1173	20170-297
0.5 ml	35,000 g	Conical-Bottom	Purple	Yes	No	1000/PK, 10000/CS	525-1174	20170-301
0.5 ml	35,000 g	Conical-Bottom	Red	Yes	No	1000/PK, 10000/CS	525-1175	20170-299
0.5 ml	35,000 g	Conical-Bottom	Yellow	Yes	No	1000/PK, 10000/CS	525-1176	20170-295
0.5 ml	35,000 g	Conical-Bottom		Yes	No	1000/PK, 10000/CS	525-1177	20170-305
1.5 ml	40,000 g	Conical-Bottom	Amber	Yes	No	500/PK, 5000/CS	525-1161	20170-036
1.5 ml	40,000 g	Conical-Bottom	Assorted	Yes	No	100/Bag/Color, 500/PK, 5000/CS	525-1167	20170-022
1.5 ml	40,000 g	Conical-Bottom	Blue	Yes	No	500/PK, 5000/CS	525-1162	20170-026
1.5 ml	40,000 g	Conical-Bottom	Natural	Yes	No	500/PK, 5000/CS	525-1164	20170-038
1.5 ml	40,000 g	Conical-Bottom	Green	Yes	No	500/PK, 5000/CS	525-1163	20170-024
1.5 ml	40,000 g	Conical-Bottom	Orange	Yes	No	500/PK, 5000/CS	525-1165	20170-032
1.5 ml	40,000 g	Conical-Bottom	Purple	Yes	No	500/PK, 5000/CS	525-1166	20170-028
1.5 ml	40,000 g	Conical-Bottom	Red	Yes	No	500/PK, 5000/CS	525-1168	20170-030
1.5 ml	40,000 g	Conical-Bottom	Yellow	Yes	No	500/PK, 5000/CS	525-1169	20170-034

Discover how our high quality J.T.Baker products for robotic sampling systems can help improve your analytical and diagnostic operations.

J.T.Baker® Robotic Tips



The quality you want for the results you need. J.T.Baker® premium conductive and clear tips for laboratory robotic and liquid handling systems, are manufactured and tested to deliver the reliable results you need to move science forward.

OVER A CENTURY OF QUALITY

For more than a century, customers around the world have trusted the application-optimized and function-tested performance of J.T.Baker® brand premium products to meet the demanding needs of a wide range of research and manufacturing applications.

DESIGNED FOR LESS DOWNTIME

Leveraging decades of experience and innovation from our Germany-based production team, J.T.Baker® robotic tips help maximise robotic tool utilization and minimize downtime, with a straighter tip and lower coefficient of variation that reduces tip breakage.

ISO CERTIFIED MANUFACTURING

Our quality is ISO certified: Our production facility is certified according to ISO 9001; we are certified according to ISO 13485:2016 for the production of medical and IVD products, and our manufacturing process adheres to the ISO 50001:2011 energy management system standard.

INDEPENDENTLY TESTED FOR PURITY

Each batch of tips is tested according to rigorous quality procedures to ensure they are contaminant-free, and they are independently tested and certified free from DNase, RNase, ATP and pyrogens.

Type Hamilton




Robotic tips for **Hamilton Microlab Star™**, **Nimbus®**, **Vantage™** and **Microlab Prep**

With conductive robotic tips from Avantor®, even small volumes can be dosed with high precision and without contamination. Conductivity enables the system to recognize the filling height and will provide a minimal immersion of the tip into the liquid, in order to ensure safe pipetting and dispensing.

Conductive tips are produced under cleanroom conditions and tested from independent laboratories to be free of DNase, RNase, ATP and pyrogens. Each lot of these tips is tested according to the quality management system by Avantor® to ensure reproducible application results.



Single tray of 96 tips.

Description	Tip color	Volume, µl	Packed	Case of	Cat. No.
Non-Sterile Tips					
					
Filtered	Black	50 µl	12x 5 racks, 96 each, blistered	5760	49010-0105
Non-Filtered	Black	50ul	12x 5 racks, 96 each, blistered	5760	49010-0003
					
Filtered	Black	300 µl	12x 5 racks, 96 each, blistered	5760	49008-0105
Non-Filtered	Black	300ul	12x 5 racks, 96 each, blistered	5760	49008-0003
					
Filtered	Black	1000 µl	8x 5 racks, 96 each, blistered	3840	49009-0105
Non-Filtered	Black	1000 µl	8x 5 racks, 96 each, blistered	3840	49009-0005

Microlab Star™, Nimbus® and Vantage™ are registered trademarks of Hamilton AG.

Type Tecan

Robotic tips for **Tecan** and **other OEM** workstations

Both in life sciences as well as in clinical diagnostics, the number of samples to be analysed is increasing constantly. For a personalised therapy, not only the correct dosage of the respective drugs is necessary, but also a concerted preliminary assessment of the individual blood samples. Blood molecules must be treated as gently as possible in order not to destroy their cell structures during pipetting.

Avantor® offers new wide bore robotic tips for this application. These pipette tips have been developed with a 50% wider opening through which particularly viscous samples such as blood plasma can be pipetted gently. The wide opening of the tip reduces the flow resistance of viscous samples thus



protecting sensitive cells. This robotic tip in particular, is most suitable for cell cultures, blood samples, macromolecules or oils.

The sample residue in the tip is minimised and pipetting accuracy is increased because of the wide opening which leads to a high sample recovery for viscous samples based on protein or genomic material, for example. This ensures high quality biological sample results.

The new 1000 µl wide bore pipette tip made of pure polypropylene, is available in both clear and conductive. The tips are manufactured under cleanroom conditions and are free from ATP, RNase, human DNA and endotoxins.



Conductive, 1000 µl, wide bore

Description	Tip color	Volume, µl	Packed	Case of	Cat. No.
Conductive tips					
					
Non-Filtered	Black	50 µl	18x10 racks, 96 each, cardboard, S-Tray	17280	49006-0000
Non-Filtered	Black	50 µl	12x2 racks, 96 each, blistered, S-Tray	2304	49006-0006
Non-Filtered	Black	50 µl	12x2 racks, 96 each, blistered, C-Tray	2304	49006-0007
Filtered	Black	50 µl	12x2 racks, 96 each, blistered, S-Tray	2304	49006-0106
Filtered	Black	50 µl	12x2 racks, 96 each, blistered, C-Tray	2304	49006-0107
					
Non-Filtered	Black	200 µl	18x10 racks, 96 each, cardboard, S-Tray	17280	49002-0000
Non-Filtered	Black	200 µl	12x2 racks, 96 each, blistered, S-Tray	2304	49002-0006
Non-Filtered	Black	200 µl	12x2 racks, 96 each, blistered, C-Tray	2304	49002-0007
Filtered	Black	200 µl	12x2 racks, 96 each, blistered, S-Tray	2304	49002-0106
Filtered	Black	200 µl	12x2 racks, 96 each, blistered, C-Tray	2304	49002-0107

continued on next page



ROBOTIC TIPS

Type Tecan is compatible with the following robotic instruments:

- Abbott Diagnostic: m2000
- Adaltis: NEXgen
- AXA Diagnostics: SkyLAB 752
- Hologic: Panther Fusion
- NGNY: AQUA System
- Perkin Elmer (Packard): Multiprobe II, Janus with Multiprobe head
- QIAgen/Corbett: CAS 1200/4200/4800, QIAgility (49002-0106 only)
- Tecan: Genesis, Freedom EVO, MiniPrep, Cavro, Fluent (C-Tray only)



Conductive, 1000 µl, tray.

Description	Tip color	Volume, µl	Packed	Case of	Cat. No.
Conductive tips					
					
Non-Filtered	Black	1000 µl	10x10 racks, 96 each, cardboard, S-Tray	9600	49003-0000
Non-Filtered	Black	1000 µl	12x2 racks, 96 each, blistered, S-Tray	2304	49003-0006
Non-Filtered	Black	1000 µl	12x2 racks, 96 each, blistered, C-Tray	2304	49003-0007
Filtered	Black	1000 µl	12x2 racks, 96 each, blistered, S-Tray	2304	49003-0106
Filtered	Black	1000 µl	12x2 racks, 96 each, blistered, C-Tray	2304	49003-0107
Conductive tips, wide bore					
					
Non-Filtered	Black	1000 µl	10x10 racks, 96 each, cardboard, S-Tray	9600	49033-0000
Non-Filtered	Black	1000 µl	12x2 racks, 96 each, blistered, S-Tray	2304	49033-0006
Filtered	Black	1000 µl	12x2 racks, 96 each, blistered, S-Tray	2304	49033-0106
Clear tips					
Non-Filtered	Clear	200 µl	18x10 racks, 96 each, cardboard, S-Tray	17280	49102-0000
Non-Filtered	Clear	1000 µl	10x10 racks, 96 each, cardboard, S-Tray	9600	49103-0000

Tecan is a registered trademark of Tecan AG.

Type Roche MagNA Pure®

Available in conductive version, with filter, non sterile.

- Manufactured under cleanroom conditions (cleanroom Class 8)
- State of the art quality control
- Barcoded trays for automated identification
- Purity level: PCR clean
- Ideal for high throughput analysis
- Packed in blister packaging

The tips are designed for use with the Roche MagNA Pure® instrument.



Description	Tip color	Volume, µl	Packed	Case of	Cat. No.
					
Filtered	Black	1000 µl	8x5 racks, 96 each, blistered	3840	49209-0105

MagNA Pure® is a registered trademark of Roche.

Type Stratec



Robotic tips for **Stratec** and **other OEM** workstations

Type Stratec is compatible with the following robotic instruments:

- Abbott Diagnostic: en4lisa
- bioMérieux: DaVinci
- Bio-Rad: Evolis
- Biotest: QuickStep
- Dade Behring (Siemens): BEP 2000 Advance
- DiaSorin: ETI-Max 3000
- Euroimmun: Euroimmun Analyzer
- Grifols: Triturus
- Human: Elisys Quattro
- QIAgen: Biorobot 3000, 8000, 9600, 9604, Biorobot universal
- Robimes: Elisia Plus
- Stratec: Gemini
- Virion\Serion: Immunomat TWINsystem



Conductive, 300 µl, tray.

Description	Tip color	Volume, µl	Packed	Case of	Cat. No.
Conductive tips					
					
Non-Filtered	Black	300 µl	18x10 racks, 96 each, cardboard	17280	49000-0000
Non-Filtered	Black	300 µl	12x2 racks, 96 each, blistered	2304	49000-0006
					
Non-Filtered	Black	1100 µl	10x10 racks, 96 each, cardboard	9600	49001-0000
Filtered	Black	1100 µl	12x2 racks, 96 each, blistered	2304	49001-0106

Type Dynex

Robotic tips for **Dynex** instruments



Dynex DSX®

For clinical diagnostic as well as for drug discovery, Avantor offers Dynex-compatible robotic tips which are especially developed for automated sample handling. With a modern production line and under cleanroom conditions, the tips are manufactured to provide the highest quality specifications for compatibility and cleanliness.



- For use with DSX® and DS2® instruments
- Packaging unit: 4x 108 tips
- Sample tips volume: 300 µl
- Reagent tips volume: 20 to 1300 µl



Sample tips, blue.



Reagent tips, clear.

Description	Tip color	Volume, µl	Packed	Case of	Cat. No.
 Non-Filtered	Blue	300 µl	18x 4 racks, 108 each	432	49136-0000
 Non-Filtered	Clear	1300 µl	18x 4 racks, 108 each	432	49137-0000

DSX® und DS2® are registered trademarks of Dynex Technologies.

Type Beckman/Olympus

Robotic tips for **diagnostic applications**

Modern healthcare institutes require the highest standards from their diagnostic partners. Avantor® developed conductive tips, specially for use in instruments in clinical diagnostics, in order to provide a smooth production flow and high quality patient results.

- Volume: 20 µl to 1200 µl
- Quantity per rack: 140 tips (sealed)
- Rigid rack for optimized tip acceptance in the OLA 2500 and AutoMate 1250/2550
- Packed: 8x 140 tips



Conductive, 1200 µl, rack.

Description	Tip color	Volume, µl	Packed	Case of	Cat. No.
 Non-Filtered	Black	1200 µl	10x 8 racks, 140 each, foiled	1120	49044-0000
Filtered	Black	1200 µl	10x 8 racks, 140 each, foiled	1120	49044-0100

Dilution strips SW



Dilution Strips SW

- Strip of 8 wells
- Made of PP

J.T.Baker® dilution strips are compatible to Dynex DSX and DS2.

Description	Packed	Pieces per case	Cat. No.
Dilution Strips SW	250	13500	43001 - 0031

VWR® Pipette Tips

High quality virgin polypropylene transparent tips, an ideal match for highly sensitive PCR works

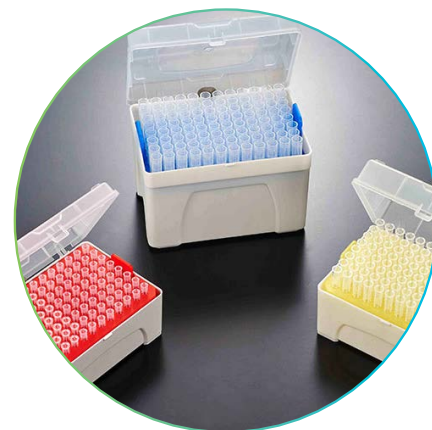
Pipette micro tips, low retention



These tips are made from super clear high-quality polypropylene. The surface of the tips is produced through a special process making the tips' inner surface super hydrophobic, thus significantly reducing sample loss and providing substantially higher reproducibility when working with critical media.

Features

- Available with 6 transfer volumes of 10µl, 20µl, 100µl, 200µl, 300µl and 1000µl
- Preferred accessories for most brand micropipettor
- Fully autoclavable to 121°C
- Color-coded racks for easy volume identification
- Tips with filter are also available
- DNase/RNase free and non-pyrogenic
- Every rack or case is printed with a batch number for traceability
- Sterilized by irradiation SAL10- 6 (ISO11137)
- Shelf life: 3 years after month of production
- Manufactured in a Class 100,000 cleanroom environment
- Manufactured under ISO13485 and ISO9001 quality management system



10µl TIPS

Tips: PP (Polypropylene), Color: Natural

Rack: PP (Polypropylene), Color: Grey/ Red

Filter: PO (Polyolefin), Color: White

Description	Sterile	Packaging Configuration	Cat. No.
10µl, super low retention, natural, Dnase/Rnase-free, Non-pyrogenic, without Filter	No	1000 tips/bag, 10 bags/case	612-6743
10µl, super low retention, natural, Dnase/Rnase-free, Non-pyrogenic, without Filter	Yes	96 tips/rack, 10 racks/box, 2 boxes/case	612-6747
10µl, super low retention, natural, Dnase/Rnase-free, Non-pyrogenic, with Filter	Yes	96 tips/rack, 10 racks/box, 2 boxes/case	612-6741

10µl LONG TIPS

Tips: PP (Polypropylene), Color: Natural

Rack: PP (Polypropylene), Color: Grey/ Red

Filter: PO (Polyolefin), Color: White

Description	Sterile	Packaging Configuration	Cat. No.
10µl, Long, super low retention, natural, Dnase/Rnase-free, Non-pyrogenic, without Filter	No	1000 tips/bag, 10 bags/case	612-6738
10µl, Long, super low retention, natural, Dnase/Rnase-free, Non-pyrogenic, without Filter	Yes	96 tips/rack, 10 racks/box, 2 boxes/case	612-6748
10µl, Long, super low retention, natural, Dnase/Rnase-free, Non-pyrogenic, with Filter	Yes	96 tips/rack, 10 racks/box, 2 boxes/case	612-6742

200µl TIPS

Tips: PP (Polypropylene), Color: Natural

Rack: PP (Polypropylene), Color: Grey/ Yellow

Filter: PO (Polyolefin), Color: White

Description	Sterile	Packaging Configuration	Cat. No.
20µl, super low retention, natural, Dnase/Rnase-free, Non-pyrogenic, with Filter	No	1000 tips/bag, 10 bags/case	612-6756
20µl, super low retention, natural, Dnase/Rnase-free, Non-pyrogenic, with Filter	Yes	96 tips/rack, 10 racks/box, 2 boxes/case	612-6758

100µl TIPS

Tips: PP (Polypropylene), Color: Natural

Rack: PP (Polypropylene), Color: Grey/ Yellow

Filter: PO (Polyolefin), Color: White

Description	Sterile	Packaging Configuration	Cat. No.
100µl, super low retention, natural, Dnase/Rnase-free, Non-pyrogenic, with Filter	No	1000 tips/bag, 10 bags/case	612-6735
100µl, super low retention, natural, Dnase/Rnase-free, Non-pyrogenic, with Filter	Yes	96 tips/rack, 10 racks/box, 2 boxes/case	612-6734

200µl TIPS

Tips: PP (Polypropylene), Color: Natural

Rack: PP (Polypropylene), Color: Grey/ Yellow

Filter: PO (Polyolefin), Color: White

Description	Sterile	Packaging Configuration	Cat. No.
200µl, super low retention, natural, Dnase/Rnase-free, Non-pyrogenic, without Filter	No	1000 tips/bag, 10 bags/case	612-6754
200µl, super low retention, natural, Dnase/Rnase-free, Non-pyrogenic, with Filter	No	1000 tips/bag, 10 bags/case	612-6751
200µl, super low retention, natural, Dnase/Rnase-free, Non-pyrogenic, without Filter	Yes	96 tips/rack, 10 racks/box, 2 boxes/case	612-6749
200µl, super low retention, natural, Dnase/Rnase-free, Non-pyrogenic, with Filter	Yes	96 tips/rack, 10 racks/box, 2 boxes/case	612-6752

300µl TIPS

Tips: PP (Polypropylene), Color: Natural

Rack: PP (Polypropylene), Color: Grey/ Yellow

Filter: PO (Polyolefin), Color: White

Description	Sterile	Packaging Configuration	Cat. No.
300µl, super low retention, natural, Dnase/Rnase-free, Non-pyrogenic, with Filter	No	1000 tips/bag, 10 bags/case	612-6760
300µl, super low retention, natural, Dnase/Rnase-free, Non-pyrogenic, with Filter	Yes	96 tips/rack, 10 racks/box, 2 boxes/case	612-6762

1000µl TIPS

Tips: PP (Polypropylene), Color: Natural

Rack: PP (Polypropylene), Color: Grey/ Blue

Filter: PO (Polyolefin), Color: White

Description	Sterile	Packaging Configuration	Cat. No.
1000µl, super low retention, natural, Dnase/Rnase-free, Non-pyrogenic, without Filter	Yes	96 tips/rack, 10 racks/box, 2 boxes/case	612-6729
1000µl, super low retention, natural, Dnase/Rnase-free, Non-pyrogenic, with Filter	Yes	96 tips/rack, 10 racks/box, 2 boxes/case	612-6769
1000µl, super low retention, natural, Dnase/Rnase-free, Non-pyrogenic, without Filter	No	1000 tips/ case	612-6797

1000µl LONG TIPS

Tips: PP (Polypropylene), Color: Natural

Rack: PP (Polypropylene), Color: Grey/ Blue

Filter: PO (Polyolefin), Color: White

Description	Sterile	Packaging Configuration	Cat. No.
1000µl, Long, super low retention, natural, Dnase/Rnase-free, Non-pyrogenic, with Filter	Yes	96 tips/rack, 10 racks/box, 2 boxes/case	612-6730

Pipette micro tips

Pipette Tips are good quality consumable products for micropipettor

Features

- Preferred accessories for most brand micropipettor
- Fully autoclavable to 121°C
- Color-coded racks for easy volume identification
- Tips with filter are also available
- DNase/RNase free and non-pyrogenic
- Every rack or case is printed with a batch number for traceability
- Sterilized by irradiation SAL10- 6 (ISO11137)
- Shelf life: 3 years after month of production
- Manufactured in a Class 100,000 cleanroom environment
- Manufactured under ISO13485 and ISO9001 quality management system



10µl TIPS

Tips: PP (Polypropylene), Color: Natural

Rack: PP (Polypropylene), Color: Grey/ Red

Filter: PO (Polyolefin), Color: White

Description	Sterile	Packaging Configuration	Cat. No.
10µl, natural, Dnase/Rnase-free, Non-pyrogenic, without Filter	No	1000 tips/bag, 10 bags/case	612-6744
10µl, natural, Dnase/Rnase-free, Non-pyrogenic, with Filter	No	1000 tips/bag, 10 bags/case	612-6726
10µl, natural, Dnase/Rnase-free, Non-pyrogenic, without Filter	Yes	96 tips/rack, 10 racks/box, 2 boxes/case	612-6745
10µl, natural, Dnase/Rnase-free, Non-pyrogenic, with Filter	Yes	96 tips/rack, 10 racks/box, 2 boxes/case	612-6739

10µl LONG TIPS

Tips: PP (Polypropylene), Color: Natural

Rack: PP (Polypropylene), Color: Grey/ Red

Filter: PO (Polyolefin), Color: White

Cat. No.	Sterile	Packaging Configuration	Cat. No.
10µl, Long, natural, Dnase/Rnase-free, Non-pyrogenic, without Filter	Yes	96 tips/rack, 10 racks/box, 2 boxes/case	612-6746
10µl, Long, natural, Dnase/Rnase-free, Non-pyrogenic, with Filter	Yes	96 tips/rack, 10 racks/box, 2 boxes/case	612-6740

20µl TIPS

Tips: PP (Polypropylene), Color: Natural

Rack: PP (Polypropylene), Color: Grey/ Yellow

Filter: PO (Polyolefin), Color: White

Description	Sterile	Packaging Configuration	Cat. No.
20µl, natural, Dnase/Rnase-free, Non-pyrogenic, with Filter	No	1000 tips/bag, 10 bags/case	612-6757
20µl, natural, Dnase/Rnase-free, Non-pyrogenic, with Filter	Yes	96 tips/rack, 10 racks/box, 2 boxes/case	612-6766

100µl TIPS

Tips - PP (Polypropylene), Color - Natural

Rack - PP (Polypropylene), Color - Grey/ Yellow

Filter - PO (Polyolefin), Color: White

Description	Sterile	Packaging Configuration	Cat. No.
100µl, natural, Dnase/Rnase-free, Non-pyrogenic, with Filter	No	1000 tips/bag, 10 bags/case	612-6736
100µl, natural, Dnase/Rnase-free, Non-pyrogenic, with Filter	Yes	96 tips/rack, 10 racks/box, 2 boxes/case	612-6737

200µl TIPS

Tips - PP (Polypropylene), Color - Natural
 Rack - PP (Polypropylene), Color - Grey/ Yellow
 Filter - PO (Polyolefin), Color - White

Description	Sterile	Packaging Configuration	Cat. No.
200µl, natural, Dnase/Rnase-free, Non-pyrogenic, without Filter	No	1000 tips/bag, 10 bags/case	612-6753
200µl, natural, Dnase/Rnase-free, Non-pyrogenic, with Filter	No	1000 tips/bag, 10 bags/case	612-6750
200µl, natural, Dnase/Rnase-free, Non-pyrogenic, without Filter	Yes	96 tips/rack, 10 racks/box, 2 boxes/case	612-6755
200µl, natural, Dnase/Rnase-free, Non-pyrogenic, with Filter	Yes	96 tips/rack, 10 racks/box, 2 boxes/case	612-6767

300µl TIPS

Tips - PP (Polypropylene), Color - Natural
 Rack - PP (Polypropylene), Color - Grey/ Yellow
 Filter - PO (Polyolefin), Color - White

Description	Sterile	Packaging Configuration	Cat. No.
300µl, natural, Dnase/Rnase-free, Non-pyrogenic, without Filter	No	1000 tips/bag, 10 bags/case	612-6763
300µl, natural, Dnase/Rnase-free, Non-pyrogenic, with Filter	No	1000 tips/bag, 10 bags/case	612-6759
300µl, natural, Dnase/Rnase-free, Non-pyrogenic, without Filter	Yes	96 tips/rack, 10 racks/box, 2 boxes/case	612-6764
300µl, natural, Dnase/Rnase-free, Non-pyrogenic, with Filter	Yes	96 tips/rack, 10 racks/box, 2 boxes/case	612-6761

1000µl TIPS

Tips - PP (Polypropylene), Color - Natural
 Rack - PP (Polypropylene), Color - Grey/ Blue
 Filter - PO (Polyolefin), Color - White

Description	Sterile	Packaging Configuration	Cat. No.
1000µl, natural, Dnase/Rnase-free, Non-pyrogenic, without Filter	No	1000 tips/bag, 10 bags/case	612-6765
1000µl, natural, Dnase/Rnase-free, Non-pyrogenic, with Filter	No	1000 tips/bag, 10 bags/case	612-6727
1000µl, natural, Dnase/Rnase-free, Non-pyrogenic, without Filter	Yes	96 tips/rack, 10 racks/box, 2 boxes/case	612-6732
1000µl, natural, Dnase/Rnase-free, Non-pyrogenic, with Filter	Yes	96 tips/rack, 10 racks/box, 2 boxes/case	612-6768

1000µl LONG TIPS

Tips - PP (Polypropylene), Color - Natural
 Rack - PP (Polypropylene), Color - Grey/ Blue
 Filter - PO (Polyolefin), Color - White

Description	Sterile	Packaging Configuration	Cat. No.
1000µl, Long, natural, Dnase/Rnase-free, Non-pyrogenic, without Filter	No	1000 tips/bag, 10 bags/case	612-6731
1000µl, Long, natural, Dnase/Rnase-free, Non-pyrogenic, with Filter	No	1000 tips/bag, 10 bags/case	612-6728
1000µl, Long, natural, Dnase/Rnase-free, Non-pyrogenic, without Filte	Yes	96 tips/rack, 10 racks/box, 2 boxes/case	612-6733



VWR® serological pipettes



SEROLOGICAL PIPETTE, STANDARD

100% high-clarity polystyrene, graduated, sterile.

- Graduations are calibrated for accurate dispensing to within $\pm 3\%$
- Color coded stripes for quick volume identification
- Non pyrogenic
- Filter plug

Individually wrapped in paper-plastic bags or bulk packed in bags.

Capacity (ml)	Division (ml)	Color code	Packed	Pk	Cat. No.
Individually wrapped					
1	0,01	Yellow	Individually wrapped, 100 per bag, 10 bags per carton	1.000	612-3707
2	0,01	Green	Individually wrapped, 100 per bag, 8 bags per carton	800	612-3704
5	0,10	Blue	Individually wrapped, 50 per bag, 6 bags per carton	300	612-3702
10	0,10	Red	Individually wrapped, 50 per bag, 4 bags per carton	200	612-3700
25	0,20	Dark red	Individually wrapped, 50 per bag, 4 bags per carton	200	612-3698
50	1,00	Black	Individually wrapped, 25 per bag, 4 bags per carton	100	612-3696
Bulk packed					
1	0,01	Yellow	25 per bag, 40 bags per carton	1.000	612-3705
2	0,01	Green	25 per bag, 28 bags per carton	700	612-3703
5	0,10	Blue	50 per bag, 10 bags per carton	500	612-3701
10	0,10	Red	25 per bag, 14 bags per carton	350	612-3699
25	0,20	Dark red	25 per bag, 14 bags per carton	350	612-3697
50	1,00	Black	25 per bag, 10 bags per carton	250	612-3695



SEROLOGICAL PIPETTES, PREMIUM LINE

PS, transparent, graduated, non sterile or sterile. These disposable pipettes for liquid transfers are made of GPPS (general polystyrene), in compliance with USP Class VI.

- DNase-/RNase-free, non pyrogenic, non cytotoxic, non haemolytic
- Meet the requirement of BST/TSE; latex-free
- Graduations are calibrated for accurate dispensing to within $\pm 2\%$
- Pipettes are color coded according to their volume
- Sterile pipettes: Sterilised by irradiation
- Printed with a batch number for traceability

Manufactured in a Class 100,000 cleanroom environment. Manufactured under EN ISO 13485:2003 and ISO 9001:2008 quality management systems.

*stretched **short form ***wide tip

Sterile pipettes are available either individually packed in peel-to-open wrap or plastic-plastic wrap or plastic packed in vacuum PE bag with zip lock (10/25/50 pipettes/bag). Non sterile pipettes are vacuum bulk packed in PE bags.

Capacity (ml)	Division (ml)	Sterile	Length (mm)	Color code	Packed	Pk	Cat. No.
Sterile, individually packed in peel-to-open wraps plastic/paper							
1*	0,01	+	268	Yellow	Individually	500	612-5504
2*	0,01	+	272	Green	Individually	500	612-5507
5	0,1	+	234**	Blue	Individually	400	612-5523
5*	0,1	+	341	Blue	Individually	400	612-5826
10	0,2	+	234**	Orange	Individually	150	612-5827
10*	0,1	+	303	Orange	Individually	400	612-5541
25	0,5	+	234**	Red	Individually	100	612-5828
25	0,2	+	308	Red	Individually	150	612-5544
50	0,5	+	346	Purple	Individually	100	612-5546
100	1	+	346	Pink	Individually	50	612-5547
Sterile, 10/25 or 50 pipettes per PE bag with zip lock							
1*	0,01	+	268	Yellow	25/bag	1.000	612-5505
2*	0,01	+	272	Green	25/bag	1.000	612-5521
5	0,1	+	234**	Blue	25/bag	500	612-5539
10*	0,1	+	303	Orange	25/bag	400	612-5542
25	0,2	+	308	Red	10/bag	150	612-5545
100	1	+	346	Pink	10/bag	60	612-5548
Non sterile, bulk packed in PE bags							
1*	0,01	-	268	Yellow	Bulk	2.000	612-5506
2*	0,01	-	272	Green	Bulk	1.000	612-5522
5	0,1	-	234**	Blue	Bulk	500	612-5540
10*	0,1	-	303	Orange	Bulk	400	612-5543



Serological pipette, green strip

SEROLOGICAL PIPETTES, TRIPLE BAGGED

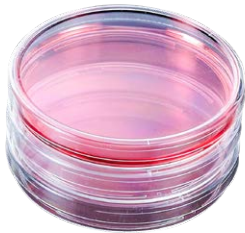
Pipettes are individually packed in plastic/plastic and then put in double-bags.

- Polyolefin filter
- Latex-, DNase- and RNase-free, non pyrogenic, non cytotoxic
- Sterility Assurance Level (SAL) of 10^{-6}
- Dispenser box: Easy opening

Color coding for easy identification.

Manufactured in a Class 100,000 cleanroom environment. Meets BSE/TSE requirement. GPPS compliant USP Class VI.

Capacity (ml)	Division (ml)	Color code	Pk	Cat. No.
1	0,01	Yellow	500	612-5890
2	0,01	Green	500	612-5891
5	0,1	Blue	400	612-5892
10	0,1	Orange	400	612-5893
25	0,1	Red	150	612-5894
50	0,1	Purple	100	612-5895
100	1	Pink	50	612-5896



PETRI DISHES

Introducing VWR® Petri Dishes, the perfect solution for bacterial culture, sample separation, and storage. With a temperature range of -20 to +60, these sterile dishes ensure quality with lot-numbered packaging for traceability. Manufactured under ISO13485 and ISO9001 standards in a Class 100,000 cleanroom, they boast uniform thickness, distortion-free bottoms, and excellent transparency. Available in sterile and non-sterile options, these 90mm dishes are a reliable choice for scientific observation and experimentation.

- Very good chemical resistance
- High temperature resistance
- Minimal thermal expansion, giving relatively high resistance to temperature changes
- Autoclavable and sterilisable

Product Category	Product Description	UOM	Case QTY	Cat. No.
Petri Dish	VWR® Petri Dishes 90mm, sterile	Case	500	VWRI391-68001
Petri Dish	VWR® Petri Dishes 90mm, non sterile	Case	500	VWRI391-68002
Petri Dish	VWR® Petri Dishes, 90mm, Sterile	Case	500	VWRI391-0681
Petri Dish	Petri dish 90X14mm, vented, Individually packed Sterile	Case	450	VWRA391-0589
Petri Dish	Petri dish 90X14mm, vented, 20 per sleeve, Sterile	Case	480	VWRA391-0590
Petri Dish	Petri dish 90X14mm, vented, 10 per sleeve, Sterile	Case	480	VWRA391-0591
Petri Dish	Petri dish 90X14mm, non vented, Individually packed Sterile	Case	450	VWRA391-0592
Petri Dish	Petri dish 90X14mm, non vented, 10 per sleeve, Sterile	Case	480	VWRA391-0593
Petri Dish	Petri dish 90X14mm, non vented, 20 per sleeve, Sterile	Case	480	VWRA391-0594
Petri Dish	Petri dish 90X14mm, vented, Individually packed Aseptic	Case	450	VWRA391-0595
Petri Dish	Petri dish 90X14mm, vented, 20 per sleeve Aseptic	Case	500	VWRA391-0596
Petri Dish	Petri dish 90X14mm, Non-vented, 20 per sleeve Aseptic	Case	500	VWRA391-0597
Petri Dish	Petri dish 90X14mm, Non-vented, 10 per sleeve Aseptic	Case	500	VWRA391-0683
Petri Dishes	Petri Dish -Vented PS, 90mm x15mm, 3 vents, Sterile	Case	500	689633-010101
Petri Dishes	Petri Dish Vented PS, 150mm x15mm, 3 vents, Sterile	Case	200	689633-010102
Petri Dishes	Petri Dish -Vented PS, 60mm x15mm, 3 vents, Sterile	Case	1000	391-0636



J.T.Baker® Plate 96 - round wells, polystyrene, clear, U-bottom

J.T.BAKER® PLATE 96

J.T.Baker® Plate 96 round well plates made from PS are ideal for ELISA applications.

- Alphanumeric coding assists with identification of samples
- Plate shape significantly reduces sample carry-over
- Standardised dimensions (128x85mm) ensure compatibility with most common laboratory machines

Description	Color	Sterile	Well volume (ml)	Pk	Cat. No.
PS plates, U-bottom	Clear	-	0,3	100	43001-0117
PS plates, V-bottom	Clear	-	0,24	100	43001-0118
PS plates, F-bottom	Clear	-	0,35	100	43001-0119
PP plates, U-bottom	Transparent	-	0,3	64	43001-0600



J.T.Baker® plate square well - 2 ml / 96 wells

PLATES, SQUARE WELL, J.T.BAKER®

These deep square well plates, made from virgin PP, are designed to make the interchanging of plates simpler in automated systems. They are also ideal for housing both cell and bacterial culture.

- Chemical resistant
- V-bottom shape for 24- and 48-wells maximises liquid removal and aids resuspension
- U-bottom shape for 96 wells
- No inner edges to interfere with magnetic bead collection
- Raised well rims to improve heat sealing
- Conical base aids sample concentration, reconstitution and centrifugation

For a maximum capacity utilisation.

Description	Color	Sterile	Well volume (ml)	Pk	Cat. No.
96-well plate	Transparent	-	2,0	20	43001-0020
48-well plate	Transparent	-	5,0	20	43001-0062
24-well plate	Transparent	-	10,0	20	43001-0066

Description	Pk	Cat. No.
Capmats for J.T.Baker® Plate Square Well		
Capmat for J.T.Baker® plate square well 96	20	43001-0022
Capmat for J.T.Baker® plate square well 48	20	43001-0069
Capmat for J.T.Baker® plate square well 24	20	43001-0070



Capmat for J.T.Baker® plate, square well, 96

CAPMATS FOR J.T.BAKER® PLATE SQUARE WELL

Description	Optical property	Material	Sterile	Packed	Pk	Cat. No.
Capmat for J.T.Baker® plate square well 96	Transparent	EVA	-	1 bag of 20	20	43001-0022
Capmat for J.T.Baker® plate square well 48	Transparent	EVA	-	1 bag of 20	20	43001-0069
Capmat for J.T.Baker® plate square well 24	Transparent	EVA	-	1 bag of 20	20	43001-0070



J.T.Baker® Plate Medio - 2 ml

J.T.BAKER® PLATE MEDIO

PP, 96-well storage plate with conical wells.

- Due to the tangency of J.T.Baker® Plate Medio plates, less than 50% stacking space is needed
- Alphanumeric code to assist identification and registration of single samples
- Higher well rims allow an airtight seal
- Conical wells aid sample mixing

J.T.Baker® Plate Medio is perfectly made for limited storage areas (fridge).

Color	Recommended working volume (µl)	Sterile	Well volume (ml)	Pk	Cat. No.
Transparent	50 - 1000	-	1,2	32	43001-0101
Transparent	20 - 500	-	0,65	40	43001-0102
Transparent	50 - 2000	-	2,3	20	43001-0103



J.T.Baker® Plate 384 – square wells, 120 µl

PLATE 384, J.T.BAKER®

Available in PP for automated screening and storage systems.

- Alphanumeric code to assist sample identification
- Square wells for increased volume
- V-bottom for high sample recovery
- High frame (3 mm) for stable and slip-free stacking
- Higher well rims avoid cross-contamination and allow better closure with adhesive films

J.T.Baker® Plate 384 is ideal for small sample volumes.

Description	Color	Recommended working volume (µl)	Sterile	Well volume (µl)	Pk	Cat. No.
PP plates	Transparent	5 - 110	-	120	60	43004-0120
PP plates	Transparent	5 - 180	-	200	40	43004-0200



J.T.Baker® Plate Round Well - 1 ml

PLATE, ROUND WELL, J.T.BAKER®

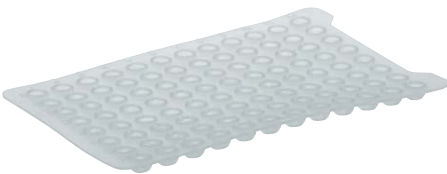
Made of virgin PP to minimise extractables.

- Raised rim to prevent cross contamination and enable a better heat-welded seal
- Also available rimless to allow insertion of vials, or when adhesive seals are used
- Round bottom for optimal mixing and recovery
- Suitable for use with automated sample handling systems
- Can be stored at -80 °C

J.T.Baker® Plate Round Well Plus with air escapes and raised rims for unfreezing samples.

Description	Color	Sterile	Well volume (ml)	Pk	Cat. No.
PS plates	Clear	-	1,0	20	43001-0010
PP plates	Transparent	-	1,0	20	43001-0016
PP plates plus, raised well rims	Transparent	-	1,0	20	43001-0116

Description	Pk	Cat. No.
Capmats for J.T.Baker® Plate Round Well		
Capmat for J.T.Baker® Plate Round Well	20	43001-0017



Capmats for J.T.Baker® Plate Round Well

CAPMATS FOR J.T.BAKER® PLATE ROUND WELL

Suitable to use with J.T.Baker® Plate Round Well 43001-0010, 43001-0016 or 43001-0116.

Description	Optical property	Material	Sterile	Packed	Pk	Cat. No.
Capmat for J.T.Baker® Plate Round Well	Transparent	EVA	-	1 bag of 20	20	43001-0017

Description	Packed	Pk	Cat. No.
Capmats for J.T.Baker® Plate Round Well			
Capmat for J.T.Baker® Plate Round Well	1 bag of 20	20	43001-0017



Cell Biology

Within the variety of life science techniques, cultivating cells probably has a unique position. Although a daily routine, being aware that a cell is the basic unit of life, you feel accountable almost as if your cells were your pets. No matter if you are seeding, expanding, harvesting, storing or analysing your cells, you will find the tools you need here.

The cell culture plastics, filtration and liquid handling chapters will help you maintain aseptic conditions all along the workflow, including single-use assemblies and bags for biopharmaceutical production. The 'Reagents' chapter provides you with access to a reliable supply of exceptional quality sera, media and supplements, while the 'Cryopreservation' chapter covers helpful storage solutions for storing cells in your lab - or maybe take advantage of our biobanking services?



VWR® Multiwell cell culture plates



MULTIWELL CELL CULTURE PLATES

VWR® multiwell cell culture plates are available with a choice of surface treatments.

- Uniform well volume ensures an equal growth surface area
- Well surface is smooth and free from striation to maximise usable growth area
- Raised rims on wells with uniform rings on the lid to reduce evaporation
- Single-position lid reduces the risk of cross-contamination and handling mistakes
- Wells are labelled with alphanumeric code for easy identification
- Suitable for use with all common instruments and automation
- Sterilised by gamma irradiation (SAL 10⁻⁶)
- Free from DNase and RNase, and non pyrogenic

Increased cell attachment surface treatment: This highly hydrophilic surface offers a significant advantage over the traditional cell culture surface. The surface treatment can improve cell spreading and attachment, and is suitable for cells that may adhere poorly due to cell phenotype, stressful culture conditions, or those which normally require additional biological coatings for attachment.

TC-treated: These plates are vacuum-gas plasma-treated for consistent cell attachment and growth.

ISO 13485:2003, ISO 9001:2008

Individually wrapped in peel-to-open paper/plastic blister packs.

Description	Color	Culture area (cm ²)	Recommended working volume (ml)	Sterile	Packed	Pk	Cat. No.
4-well plates, flat bottom, TC-treated	Clear	1,96	1,0	+	1/bag	100	732-2905
4-well plates, flat bottom, non treated	Clear	1,96	1,0	+	1/bag	100	732-2904
6-well plates, flat bottom, treated for increased cell attachment	Clear	9,6	1,9 – 2,9	+	1/bag	100	734-2798
6-well plates, flat bottom, TC-treated	Clear	9,6	1,9 – 2,9	+	1/bag	100	734-2323
6-well plates, flat bottom, non treated	Clear	9,6	1,9 – 2,9	+	1/bag	100	734-2777
12-well plates, flat bottom, treated for increased cell attachment	Clear	3,85	0,76 – 1,14	+	1/bag	100	734-2799
12-well plates, flat bottom, TC-treated	Clear	3,85	0,76 – 1,14	+	1/bag	100	734-2324
12-well plates, flat bottom, non treated	Clear	3,85	0,76 – 1,14	+	1/bag	100	734-2778
24-well plates, flat bottom, treated for increased cell attachment	Clear	1,93	0,38 – 0,57	+	1/bag	100	734-2800
24-well plates, flat bottom, TC-treated	Clear	1,93	0,38 – 0,57	+	1/bag	100	734-2325
24-well plates, flat bottom, non treated	Clear	1,93	0,38 – 0,57	+	1/bag	100	734-2779
48-well plates, flat bottom, treated for increased cell attachment	Clear	0,83	0,19 – 0,29	+	1/bag	100	734-2801
48-well plates, flat bottom, TC-treated	Clear	0,83	0,19 – 0,29	+	1/bag	100	734-2326
48-well plates, flat bottom, non treated	Clear	0,83	0,19 – 0,29	+	1/bag	100	734-2780
48-well plates, flat bottom, non treated	Clear	0,83	0,19 – 0,29	+	1/bag	200	734-2888
96-well plates, flat bottom, treated for increased cell attachment	Clear	0,33	0,075 – 0,20	+	1/bag	100	734-2802
96-well plates, flat bottom, TC-treated	Clear	0,33	0,075 – 0,20	+	1/bag	100	734-2327
96-well plates, flat bottom, non treated	Clear	0,33	0,075 – 0,20	+	1/bag	100	734-2781
96-well plates, round bottom, treated for increased cell attachment	Clear	0,32	0,075 – 0,20	+	1/bag	100	734-2803
96-well plates, round bottom, TC-treated	Clear	0,32	0,075 – 0,20	+	1/bag	100	734-2328
96-well plates, round bottom, non treated	Clear	0,32	0,075 – 0,20	+	1/bag	100	734-2782
384-well plates, flat bottom, TC-treated	Clear	0,1135	10 – 100 µl	+	1/bag	100	732-2907
384-well plates, flat bottom, non treated	Clear	0,1135	10 – 100 µl	+	1/bag	100	732-2906

VWR® PET square bottles, with screw cap



Individually packed square PET media bottles, sterile

BOTTLES, PET, SQUARE, WITH SCREW CAP

Square PET media bottles that are designed for packaging, storing, or transporting powder and liquid samples.

- Square design allows efficient use of storage space
- PET resin is lightweight, break-resistant and transparent
- Bottles feature moulded-in graduations
- EB Sterilisation Sterility Assurance Level (SAL) of 10^{-6} (ISO 11137)
- Non pyrogenic

VWR® square PET media bottles are manufactured in a Class 100,000 cleanroom environment. Manufactured under EN ISO 13485:2016.

Bottles meet the requirements of BSE/TSE, the BPA statement and heavy metals ROHS.

Bottles are available individually wrapped, or in tray packs (individually wrapped within two outer packs per case).

Capacity (ml)	Ø ext. (mm)	Height (mm)	Color	Cap color	Version	Pk	Cat. No.
250	59,3 ±0,8	139,5 ±1	Transparent	White	Sterile, individually packed	100	391-0626
500	77,2 ±0,8	172,4 ±1,2	Transparent	White	Sterile, individually packed	100	391-0627
1000	93 ±1,5	212,3 ±1,5	Transparent	White	Sterile, individually packed	48	391-0628
250	59,3 ±0,8	139,5 ±1	Transparent	White	Sterile, tray packed (24/tray, 2 trays/case)	48	391-0629
500	77,2 ±0,8	172,4 ±1,2	Transparent	White	Sterile, tray packed (24/tray, 2 trays/case)	48	391-0630
1000	93 ±1,5	212,3 ±1,5	Transparent	White	Sterile, tray packed (12/tray, 2 trays/case)	24	391-0631

VWR® Erlenmeyer flasks



Flask, 4 baffles, 250 ml

ERLENMEYER FLASKS WITH FOUR BAFFLES, VWR®

Borosilicate glass 3.3, with 4 baffles, GL 45 thread and blue GL 45 screw cap made from PP.

- High chemical and thermal resistance
- Four equi-distant baffles providing consistent agitation when used with orbital shakers
- Ideal for bacterial culture production
- Complete with blue PP GL 45 screw cap
- Autoclavable at 121 °C

VWR® baffled flasks are delivered with a standard GL 45 screw cap which can be replaced with the GL 45 membrane screw cap, with 0,2 µm PTFE membrane from DWK (Cat. No. SCOT291182809) to ensure optimal gas exchange for optimal bacteria growth.

Capacity (ml)	Height (mm)	Ø ext. (mm)	Thread	Pk	Cat. No.
250	130	82	GL 45	1	214-0436
500	165	101	GL 45	1	214-0437
1000	205	129	GL 45	1	214-0438
2000	265	161	GL 45	1	214-0439

VWR® Roller Bottle



Roller bottle

ROLLER BOTTLES, VWR®

Roller bottles are optimal vessels for large scale cell growth and multiplication, that are suitable for both research and manufacturing applications, including the growth of mammalian cells for virus propagation and bioproduction.

- Caps feature large knurls for easy grip
- Two different cap styles can be used in both open and closed systems
- Every bottle features silk-printed graduations
- Non pyrogenic
- Temperature range: -20 to +50 °C
- Every case features a labelled lot number
- Sterilised by electron beam irradiation

These vessels suit automation and fit all common roller bottle instrumentation. Vessels are available with a large area surface area for cell growth of 490, 850 and 1900 cm² for adhesion cultures and 1 or 2 litre volume, for suspension cultures. The bottles are surface treated for optimal cell attachment. Bottles with smooth surface are free from striations, to maximise usable growth area; those with ribbed surface offer a larger surface area for cell growth.

ISO 9001, ISO 13485

Note: Bottles are not autoclavable

*The product(s) on this page are outside the scope of the EU Directive 2019/904

Description	Capacity (ml)	Growth area (cm ²)	Packed	Pk	Cat. No.
Treated surface, plug-seal cap	1000	490	2/bag, 40/case	40	734-2749
Treated surface, plug-seal cap	2000	850	20/bag, 20/case	20	734-2750
Treated surface, vented cap	2000	850	2/bag, 40/case	40	734-2752
Treated surface, plug-seal cap	2000	850	2/bag, 40/case	40	734-3368
Treated surface, ribbed, plug-seal cap	2000	1900	2/bag, 40/case	40	734-3369
Treated surface, plug-seal cap	5000	1700	1/bag, 12/case	12	734-3248
Treated surface, vented cap	5000	1700	1/bag, 12/case	12	734-3249
Treated surface, plug-seal cap	5000	4250	1/bag, 12/case	12	734-3250
Treated surface, vented cap	5000	4250	1/bag, 12/case	12	734-3251



VWR® 2000 ML ERLENMEYER FLASK

Description

2000 mL, PC, Non-treated, Plug Seal Cap or Vent Cap, Sterile

Purpose

Ideal for shaker culture applications and storage

Materials

Flask: PC (Polycarbonate)

Cap: HDPE (High-density Polyethylene) **Color:** Green

Membrane: 0.22 µm Hydrophobic PTFE (only use for Vent Cap)

FEATURES

- Temperature range for PC Flasks: -80°C to +121°C
- PC provides excellent optical clarity and mechanical strength
- Unlike glass, flasks will not break when dropped
- Molded-in graduations for accuracy
- Available with plug seal cap or vent cap
- Vent cap option for continuous gas exchange while ensuring sterility and preventing leakage
- Triple bags, individually packaged for VWR 2L-3L-5L PC Erlenmeyer Flasks
- Non-cytotoxic
- DNase/RNase free and non-pyrogenic
- Sterilized by irradiation SAL 10-6 (ISO11137)
- Shelf Life: 3 years after month of production
- Manufactured in a class 100,000 clean room environment
- Manufactured under ISO13485 and ISO9001 quality management system

VWR® 2000 mL Erlenmeyer Flask

Capacity	Flask Material	Cap Style	Cap Color	Sterilization	Packaging Configuration	Cat. No.
2000 mL	PC	Plug seal cap	Green	Yes	1/PK, 6 PK/CS	214-0476
2000 mL	PC	Vent cap	Green	Yes	1/PK, 6 PK/CS	214-0477
Cap		Plug seal cap	Green	Yes	1/PK, 24 PK/CS	214-0488
Cap		Vent cap	Green	Yes	1/PK, 24 PK/CS	214-0489



VWR® 3000 ML ERLENMEYER FLASK

Description

3000 mL, PC, Non-treated, Plug Seal Cap or Vent Cap, Sterile

Purpose

Ideal for shaker culture applications and storage

Materials

Flask: PC (Polycarbonate)

Cap: HDPE (High-density Polyethylene) **Color:** Green **Membrane:** 0.22 µm Hydrophobic PTFE (only use for Vent Cap)

VWR® 3000mL Erlenmeyer Flask

Capacity	Flask Material	Cap Style	Cap Color	Sterilization	Packaging Configuration	Cat. No.
3000 mL	PC	Plug seal cap	Green	Yes	1/PK, 4 PK/CS	214-0478
3000 mL	PC	Vent cap	Green	Yes	1/PK, 4 PK/CS	214-0479
Cap		Plug seal cap	Green	Yes	1/PK, 24 PK/CS	214-0490
Cap		Vent cap	Green	Yes	1/PK, 24 PK/CS	214-0491



VWR® 5000 ML ERLENMEYER FLASK

Description

5000 mL, PC, Non-treated, Plug Seal Cap or Vent Cap, Sterile

Purpose

Ideal for shaker culture applications and storage

Materials

Flask: PC (Polycarbonate)

Cap: HDPE (High-density Polyethylene) **Color:** Green

Membrane: 0.22 µm Hydrophobic PTFE (only use for Vent Cap)

VWR® 5000 mL Erlenmeyer Flask

Capacity	Flask Material	Cap Style	Cap Color	Sterilization	Packaging Configuration	Cat. No.
5000 mL	PC	Plug seal cap	Green	Yes	1/PK, 4 PK/CS	214-0480
5000 mL	PC	Vent cap	Green	Yes	1/PK, 4 PK/CS	214-0481
Cap		Plug seal cap	Green	Yes	1/PK, 24 PK/CS	214-0492
Cap		Vent cap	Green	Yes	1/PK, 24 PK/CS	214-0493



VWR® PETG ERLENMEYER SHAKER FLASKS

Description

Baffled Bottom, PETG, Non-treated, Plug Seal Cap or Vent Cap, Sterile

Purpose

Ideal for shaker culture applications and storage

Materials

Flask: PETG (Polyethylene Terephthalate Glycol)

Cap: HDPE (High-density Polyethylene) **Color:** Green

Membrane: 0.22 µm Hydrophobic PTFE (only use for Vent Cap)

FEATURES

- Temperature range for PETG Flasks: -60°C to +60°C
- Crystal-clear PETG is robust and break resistant, increasing personal safety Unlike glass, flasks will not break when dropped
- Molded-in graduations for accuracy
- Available with plug seal cap or vent cap
- Vent cap option for continuous gas exchange while ensuring sterility and preventing leakage
- Unique baffled design with a molded-in "1/3 Fill" line for customer convenience
- Baffled bottoms improve mixing and increase gas exchange
- Individually packaged
- Non-cytotoxic
- DNase/RNase free and non-pyrogenic
- Sterilized by irradiation SAL10⁻⁶ (ISO11137)
- Shelf Life: 3 years after month of production
- Manufactured in a class 100,000 room environment
- Manufactured under ISO13485 and ISO9001 quality management system

VWR® PETG Erlenmeyer Shaker Flasks

Capacity	Flask Material	Cap Style	Cap Color	Sterilization	Packaging Configuration	Cat. No.
125 mL	PETG	Plug seal cap	Green	Yes	1/PK, 24 PK/CS	214-0466
125 mL	PETG	Vent cap	Green	Yes	1/PK, 24 PK/CS	214-0467
Cap		Plug seal cap	Green	Yes	1/PK, 25PK/Bag, 4 Bags/CS	214-0482
Cap		Vent cap	Green	Yes	1/PK, 25PK/Bag, 4 Bags/CS	214-0483
250 mL	PETG	Plug seal cap	Green	Yes	1/PK, 12 PK/CS	214-0468
250 mL	PETG	Vent cap	Green	Yes	1/PK, 12 PK/CS	214-0469
Cap		Plug seal cap	Green	Yes	1/PK, 25PK/Bag, 4 Bags/CS	214-0484
Cap		Vent cap	Green	Yes	1/PK, 25PK/Bag, 4 Bags/CS	214-0485
500 mL	PETG	Plug seal cap	Green	Yes	1/PK, 12 PK/CS	214-0470
500 mL	PETG	Vent cap	Green	Yes	1/PK, 12 PK/CS	214-0473
Cap		Plug seal cap	Green	Yes	1/PK, 25PK/Bag, 4 Bags/CS	214-0486
Cap		Vent cap	Green	Yes	1/PK, 25PK/Bag, 4 Bags/CS	214-0487
1000 mL	PETG	Plug seal cap	Green	Yes	1/PK, 24 PK/CS	214-0474
1000 mL	PETG	Vent cap	Green	Yes	1/PK, 24 PK/CS	214-0475
Cap		Plug seal cap	Green	Yes	1/PK, 25PK/Bag, 4 Bags/CS	214-0486
Cap		Vent cap	Green	Yes	1/PK, 25PK/Bag, 4 Bags/CS	214-0487



VWR® PC ERLLENMEYER SHAKER FLASKS, BAFFLED BOTTOM

Description

Baffled Bottom, PC, Non-treated, Plug Seal Cap or Vent Cap, Sterile

Purpose

Ideal for shaker culture applications and storage

Materials

Flask: PC (Polycarbonate)

Cap: HDPE (High-density Polyethylene) **Color:** Green

Membrane: 0.22 µm Hydrophobic PTFE (only use for Vent Cap)

FEATURES

- Temperature range for PC Flasks: -80°C to +121°C
- PC provides excellent optical clarity and mechanical strength
- Unlike glass, flasks will not break when dropped
- Molded-in graduations for accuracy
- Available with plug seal cap or vent cap
- Vent cap option for continuous gas exchange while ensuring sterility and preventing leakage
- Unique baffled design with a molded-in "1/3 Fill" line for customer convenience
- Baffled bottoms improve mixing and increase gas exchange
- Individually packaged
- Non-cytotoxic
- DNase/RNase free and non-pyrogenic
- Sterilized by irradiation SAL10-6 (ISO11137)
- Shelf Life: 3 years after month of production
- Manufactured in a class 100,000 room environment
- Manufactured under ISO13485 and ISO9001 quality management system

VWR® PC Erlenmeyer Shaker Flasks

Capacity	Flask Material	Cap Style	Cap Color	Sterilization	Packaging Configuration	Cat. No.
125 mL	PC	Plug seal cap	Green	Yes	1/PK, 24 PK/CS	214-0458
125 mL	PC	Vent cap	Green	Yes	1/PK, 24 PK/CS	214-0459
Cap		Plug seal cap	Green	Yes	1/PK, 25PK/Bag, 4 Bags/CS	214-0482
Cap		Vent cap	Green	Yes	1/PK, 25PK/Bag, 4 Bags/CS	214-0483
250 mL	PC	Plug seal cap	Green	Yes	1/PK, 12 PK/CS	214-0460
250 mL	PC	Vent cap	Green	Yes	1/PK, 12 PK/CS	214-0461
Cap		Plug seal cap	Green	Yes	1/PK, 25PK/Bag, 4 Bags/CS	214-0484
Cap		Vent cap	Green	Yes	1/PK, 25PK/Bag, 4 Bags/CS	214-0485
500 mL	PC	Plug seal cap	Green	Yes	1/PK, 12 PK/CS	214-0462
500 mL	PC	Vent cap	Green	Yes	1/PK, 12 PK/CS	214-0463
Cap		Plug seal cap	Green	Yes	1/PK, 25PK/Bag, 4 Bags/CS	214-0486
Cap		Vent cap	Green	Yes	1/PK, 25PK/Bag, 4 Bags/CS	214-0487
1000 mL	PC	Plug seal cap	Green	Yes	1/PK, 24 PK/CS	214-0464
1000 mL	PC	Vent cap	Green	Yes	1/PK, 24 PK/CS	214-0465
Cap		Plug seal cap	Green	Yes	1/PK, 25PK/Bag, 4 Bags/CS	214-0486
Cap		Vent cap	Green	Yes	1/PK, 25PK/Bag, 4 Bags/CS	214-0487



VWR® PC ERLENMEYER SHAKER FLASKS

Description

PC, Non-treated, Plug Seal Cap or Vent Cap, Sterile

Purpose

Ideal for shaker culture applications and storage

Materials

Flask: PC (Polycarbonate)

Cap: HDPE (High-density Polyethylene) **Color:** Green

Membrane: 0.22 µm Hydrophobic PTFE (only use for Vent Cap)

FEATURES

- Temperature range for PC Flasks: -80°C to +121°C
- PC provides excellent optical clarity and mechanical strength
- Unlike glass, flasks will not break when dropped
- Molded-in graduations for accuracy
- Available with plug seal cap or vent cap
- Vent cap option for continuous gas exchange while ensuring sterility and preventing leakage
- Individually packaged
- Non-cytotoxic
- DNase/RNase free and non-pyrogenic
- Sterilized by irradiation SAL10-6 (ISO11137)
- Shelf Life: 3 years after month of production
- Manufactured in a class 100,000 room environment
- Manufactured under ISO13485 and ISO9001 quality management system

VWR® PC Erlenmeyer Shaker Flasks

Capacity	Flask Material	Cap Style	Cap Color	Sterilization	Packaging Configuration	Cat. No.
125 mL	PC	Plug seal cap	Green	Yes	1/PK, 24 PK/CS	214-0446
125 mL	PC	Vent cap	Green	Yes	1/PK, 24 PK/CS	214-0447
Cap		Plug seal cap	Green	Yes	1/PK, 25PK/Bag, 4 Bags/CS	214-0482
Cap		Vent cap	Green	Yes	1/PK, 25PK/Bag, 4 Bags/CS	214-0483
250 mL	PC	Plug seal cap	Green	Yes	1/PK, 12 PK/CS	214-0448
250 mL	PC	Vent cap	Green	Yes	1/PK, 12 PK/CS	214-0449
Cap		Plug seal cap	Green	Yes	1/PK, 25PK/Bag, 4 Bags/CS	214-0484
Cap		Vent cap	Green	Yes	1/PK, 25PK/Bag, 4 Bags/CS	214-0485
500 mL	PC	Plug seal cap	Green	Yes	1/PK, 12 PK/CS	214-0450
500 mL	PC	Vent cap	Green	Yes	1/PK, 12 PK/CS	214-0451
Cap		Plug seal cap	Green	Yes	1/PK, 25PK/Bag, 4 Bags/CS	214-0486
Cap		Vent cap	Green	Yes	1/PK, 25PK/Bag, 4 Bags/CS	214-0487
1000 mL	PC	Plug seal cap	Green	Yes	1/PK, 24 PK/CS	214-0452
1000 mL	PC	Vent cap	Green	Yes	1/PK, 24 PK/CS	214-0453
Cap		Plug seal cap	Green	Yes	1/PK, 25PK/Bag, 4 Bags/CS	214-0486
Cap		Vent cap	Green	Yes	1/PK, 25PK/Bag, 4 Bags/CS	214-0487



VWR® PETG ERLLENMEYER SHAKER FLASKS

Description

PETG, Non-treated, Plug Seal Cap or Vent Cap, Sterile

Purpose

Ideal for shaker culture applications and storage

Materials

Flask: PETG (Polyethylene Terephthalate Glycol)

Cap: HDPE (High-density Polyethylene) **Color:** Green

Membrane: 0.22 µm Hydrophobic PTFE (only use for Vent Cap)

FEATURES

- Temperature range for PETG Flasks: -60°C to +60°C
- Crystal-clear PETG is robust and break resistant, increasing personal safety
- Unlike glass, flasks will not break when dropped
- Molded-in graduations for accuracy
- Available with plug seal cap or vent cap
- Vent cap option for continuous gas exchange while ensuring sterility and preventing leakage
- Individually packaged
- Non-cytotoxic
- DNase/RNase free and non-pyrogenic
- Sterilized by irradiation SAL10⁻⁶ (ISO11137)
- Shelf Life: 3 years after month of production
- Manufactured in a class 100,000 room environment
- Manufactured under ISO13485 and ISO9001 quality management system

VWR® PETG Erlenmeyer Shaker Flasks

Capacity	Flask Material	Cap Style	Cap Color	Sterilization	Packaging Configuration	Cat. No.
125 mL	PETG	Plug seal cap	Green	Yes	1/PK, 24 PK/CS	214-0440
125 mL	PETG	Vent cap	Green	Yes	1/PK, 24 PK/CS	214-0443
Cap		Plug seal cap	Green	Yes	1/PK, 25PK/Bag, 4 Bags/CS	214-0482
Cap		Vent cap	Green	Yes	1/PK, 25PK/Bag, 4 Bags/CS	214-0483
250 mL	PETG	Plug seal cap	Green	Yes	1/PK, 12 PK/CS	214-0441
250 mL	PETG	Vent cap	Green	Yes	1/PK, 12 PK/CS	214-0444
Cap		Plug seal cap	Green	Yes	1/PK, 25PK/Bag, 4 Bags/CS	214-0484
Cap		Vent cap	Green	Yes	1/PK, 25PK/Bag, 4 Bags/CS	214-0485
500 mL	PETG	Plug seal cap	Green	Yes	1/PK, 12 PK/CS	214-0442
500 mL	PETG	Vent cap	Green	Yes	1/PK, 12 PK/CS	214-0445
Cap		Plug seal cap	Green	Yes	1/PK, 25PK/Bag, 4 Bags/CS	214-0486
Cap		Vent cap	Green	Yes	1/PK, 25PK/Bag, 4 Bags/CS	214-0487
1000 mL	PETG	Plug seal cap	Green	Yes	1/PK, 24 PK/CS	214-0454
1000 mL	PETG	Vent cap	Green	Yes	1/PK, 24 PK/CS	214-0455
Cap		Plug seal cap	Green	Yes	1/PK, 25PK/Bag, 4 Bags/CS	214-0486
Cap		Vent cap	Green	Yes	1/PK, 25PK/Bag, 4 Bags/CS	214-0487



VWR® T225 CELL AND TISSUE CULTURE FLASKS

Description

T225, Surface Treated, w/Plug Seal Cap or Vent Cap, Sterile

Purpose

For use in applications where cell attachment is desired or not desired

Materials

Flask: GPPS (General Polystyrene)

Cap: HDPE (High-density Polyethylene) **Color:** Green

Membrane: 0.22 µm Hydrophobic PTFE (only use for Vent Cap)

FEATURES

- Temperature range: -20°C ~ +50°C
- Vent caps incorporate a 0.22 µm hydrophobic membrane for optimal gas exchange while protecting against contamination
- Special area near the neck for easy mark writing
- Both flask sides have engraved graduation
- Max. Working volume: 400 mL
- Recommended Working volume: 45 - 67.5 mL
- Growth area: 225.0 cm²
- Autoclavability: No
- DNase/RNase free and non-pyrogenic
- Sterilized by irradiation SAL 10-6 (ISO11137)
- Shelf Life: 3 years after month of production
- Manufactured in a class 100,000 clean room environment Manufactured under ISO13485 and ISO9001 quality management system

VWR® T225 Cell and Tissue Culture Flasks

Description	Sterilization	Packaging Configuration	Cat. No.
T225, Surface-treated, w/Plug seal cap	Yes	5/PK, 5 PK/CS	734-3419
T225, Surface-treated, w/Vent cap	Yes	5/PK, 5 PK/CS	734-3420



VWR[®] contamination control

Welcome to the VWR[®] branded range of products for contamination control.

We understand that contamination events can have a big impact, with lost time, yield, or cost, so we offer an extensive range of products to not only prevent contamination, but also for ongoing monitoring and cleaning of your environment.

Whether you work in sterile or non sterile production facilities, within research labs or cleanrooms, this range of products offers quality and performance in use, while being supported by VWR values and logistics.

We are also market leaders in the provision of services to support process efficiency or regulatory compliance, and we offer custom manufacturing or kitting services with **VWR**Catalyst.





BOUFFANT CAPS WITH VISOR, PP

Bouffant caps made from non woven PP. For non critical applications.

- With visor (white or blue)
- Latex-free
- Available with mesh cap for use with long hair

Weight: 12 g/m²

In bags.

Type	Ø (mm)	Color	Pk	Cat. No.
Standard	510	White	100	113-8251
Standard	510	Blue	100	113-8252
For long hair	510	White	100	113-8253



CLEANROOM FACE MASKS, MAXIMUM

Maximum cleanroom masks feature 3 ply construction for superior particle and bacterial filtration efficiency. These masks are latex-free.

- 3 ply masks provide high bacterial and particle filtration efficiency
- Highly breathable and fluid resistant
- A full-length plastic arch holds the fabric away from the wearer's mouth to allow cooler, more comfortable breathing
- Malleable noseband ensures a custom, secure seal
- Available with spandex ear loops or PP ties, ultrasonically welded to maintain softness and guard against particulates
- Moisture resistant, sterile mask features a unique, lightweight inner layer of film for enhanced moisture resistance

Particle shedding (particles: ≥0,5 µm/cu. ft.): 196 (IEST-RP-CC003.3) Bacterial filtration efficiency: >95% (ASTM F2101)

50 masks per cleanroom-compatible, heat-sealed bag; 10 bags per case.

Type	Size (mm)	Color	Pk	Cat. No.
Non sterile, with ear loops	175x95	Blue	500	113-6220
Non sterile, with ties	175x95	White	500	113-6221
Sterile, with ear loops	175x95	White	500	113-6222



CLEANROOM GLOVES, LATEX, CERTICLEAN®

Ambidextrous gloves with beaded cuffs for strength and reduction of cuff roll down.

- Film thickness designed for comfort and tactile sensitivity
- Textured for a reliable grip
- Low particle counts
- Minimised ionic contaminants and non volatile residue (NVR) transfer

Suitable for use in Class 100, ISO 5, M3.5 cleanrooms.

Packaged in cleanroom-compatible polyethylene, 100 gloves per double poly bag, 10 bags per case.

Ambidextrous / hand-specific	Ambidextrous
Disposable / reusable	Disposable
Powdered / powder-free	Powder-free
Cleanroom class	100/ISO 5
Cuff style	Beaded
Finger thickness	0,22 mm
Palm thickness	0,20 mm

Glove size	Color	Length (mm)	Packed	Pk	Cat. No.
S	Natural	305	10 bags, 100 each	1,000	40101-158
M	Natural	305	10 bags, 100 each	1,000	40101-160
L	Natural	305	10 bags, 100 each	1,000	40101-162
XL	Natural	305	10 bags, 100 each	1,000	40101-164



CLEANROOM GLOVES, NITRILE, CERTICLEAN®

Ambidextrous gloves with beaded cuffs made from silicone-free nitrile. The specialised manufacturing processes result in consistently low particle counts and low levels of ionic extractables and non-volatile residue (NVR) transfer.

- Non sterile, powder-free, textured fingertips
- In-use static dissipative properties are superior to natural rubber latex
- Tapered cuff provides more coverage over the garment sleeve

Suitable for use in Class 10, ISO 4, M2.5 and lower cleanrooms.

Packaged in cleanroom-compatible polyethylene, 100 gloves/double poly bag, 10 bags/case.

Ambidextrous / hand-specific	Ambidextrous
Disposable / reusable	Disposable
Powdered / powder-free	Powder-free
Cleanroom class	10/ISO 4
Cuff style	Beaded
Finger thickness	0,16 mm
Palm thickness	0,13 mm

Glove size	Color	Length (mm)	Packed	Pk	Cat. No.
XS	White	305	10 bags, 100 each	1.000	VWVU40101-353
S	White	305	10 bags, 100 each	1.000	112-0481
M	White	305	10 bags, 100 each	1.000	112-0483
L	White	305	10 bags, 100 each	1.000	112-0484



CLEANROOM LAB COATS, VWR® BASIC, SPP, DISPOSABLE

The VWR® Basic SPP lab coats are manufactured from a strong, lightweight, and breathable spunbonded polypropylene (SPP) fabric, which protects against dirt, grime, and certain dry particulates in non hazardous environments.

- Tapered collar, inset sleeves, snap closure
- Elasticated or knitted cuffs, no pockets or three pockets
- Lightweight and breathable first line barrier protection

This garment is ideal for less critical areas or pre-gowning entry rooms. It is tested and manufactured in an ISO certified facility and lot controlled and validated through independent laboratory testing.

25 or 30 coats per carton.

Clothing size	Color	Pk	Cat. No.
With elasticated cuffs, no pockets			
S	White	25	113-1118
M	White	25	113-1119
L	White	25	113-1120
XL	White	25	113-1121
XXL	White	25	113-1122
With knitted cuffs, three pockets			
S	White	30	113-1111
M	White	30	113-1112
L	White	30	113-1113
XL	White	30	113-1114
XXL	White	30	113-1115



LAB COATS, VWR® ADVANCED, SF, DISPOSABLE

VWR® Advanced SF lab coats are manufactured from spunbonded polypropylene fabric coated with breathable polyethylene film.

- Tapered collar, inset sleeves, snap closure, elasticated cuffs, three pockets
- Durable fabric with good breathability and water transmission rate
- Significant fluid and particle barrier
- Particle shedding: Level II Helmke drum classification
- Soft, cloth-like fabric

Tested and manufactured in an ISO certified facility under stringent process controls. Lot-controlled and validated through independent laboratory testing.

Clothing size	Color	Pk	Cat. No.
S	White	25	113-1145
M	White	25	113-1146
L	White	25	113-1147
XL	White	25	113-1148
XXL	White	25	113-1149



CLEANROOM LAB COATS, VWR® MAXIMUM, SF

VWR® Maximum SF lab coats are the cleanest and most durable within the entire VWR® clothing line. Made from spunbonded polypropylene fabric (SPP) and coated with breathable polyethylene film, these garments have been designed to optimise barrier protection, cleanliness and comfort properties.

- Tapered collar, inset sleeves, snap closure, elasticated cuffs, three pockets
- Superior fluid and particulate barrier
- Lowest level of particle shedding: Level I Helmke drum classification
- Light chemical splash resistance
- Improved breathability to ensure user comfort
- Soft, cloth-like fabric with maximum tear strength

Tested and manufactured in an ISO certified facility under stringent process controls. Lot-controlled and validated through independent laboratory testing.

Clothing size	Color	Pk	Cat. No.
S	White	25	113-1138
M	White	25	113-1139
L	White	25	113-1140
XL	White	25	113-1141
XXL	White	25	113-1142



FROCKS, VWR® BASIC, SPP

VWR® Basic SPP frocks are manufactured from a strong, lightweight and breathable, spunbonded polypropylene (SPP) fabric, which protects against dirt, grime, and certain dry particulates, in non hazardous environments.

- Snap collar, raglan sleeves, snap closure
- Elasticated cuffs, no pockets
- Lightweight and breathable first line barrier protection

This garment is ideal for less critical areas or pre-gowning entry rooms. It is tested and manufactured in an ISO certified facility that is lot-controlled and validated through independent laboratory testing.

Clothing size	Color	Pk	Cat. No.
M	White	30	113-1151
L	White	30	113-1152
XL	White	30	113-1153
XXL	White	30	113-1154



FROCKS, WITH VELCRO®, VWR BASIC, SPP

VWR® Basic SPP frocks are manufactured from a strong, lightweight and breathable, spunbonded polypropylene (SPP) fabric, which protects against dirt, grime, and certain dry particulates, in non hazardous environments.

- Snap collar, raglan sleeves, VELCRO® closure, knitted cuffs, no pockets
- Lightweight and breathable first line barrier protection

This garment is ideal for less critical areas or pre-gowning entry rooms. It is tested and manufactured in an ISO certified facility that is lot-controlled and validated through independent laboratory testing.

Clothing size	Color	Pk	Cat. No.
S	White	30	113-1988
M	White	30	113-1989
L	White	30	113-1990
XL	White	30	113-1991
XXL	White	30	113-1992



FROCKS, VWR® BASIC, SMS

These SMS frocks are manufactured from a latex-free, multi-layer spunbonded-meltblown-spunbonded (SMS) fabric, that offers high tensile strength while remaining soft, comfortable and breathable.

- Snap collar, raglan sleeves, snap closure
- Fluid and particulate barrier
- Light chemical splash resistance

Clothing size	Color	Pk	Cat. No.
S	White	30	113-1156
M	White	30	113-1157
L	White	30	113-1158
XL	White	30	113-1159
XXL	White	30	113-1160
M	Blue	30	113-1162
L	Blue	30	113-1174
XL	Blue	30	113-1175
XXL	Blue	30	113-1176



FROCKS, VWR® ADVANCED, SF

VWR® Advanced SF frocks are manufactured from spunbonded polypropylene fabric (SPP) and coated with breathable polyethylene film.

- Snap collar, raglan sleeves, snap closure, elasticated cuffs
- Durable fabric, with good breathability, and water transmission rate
- Significant fluid and particulate barrier
- Particle shedding: Level II Helmke drum classification
- Soft, cloth-like fabric

Tested and manufactured in an ISO certified facility under stringent process controls. Lot-controlled and validated through independent laboratory testing.

Clothing size	Color	Pk	Cat. No.
S	White	25	113-1177
M	White	25	113-1178
L	White	25	113-1179
XL	White	25	113-1180
XXL	White	25	113-1181



FROCKS, VWR® MAXIMUM, SF

VWR® Maximum SF frocks are the cleanest and most durable within the entire VWR® clothing line. Made from spunbonded polypropylene fabric (SPP) and coated with breathable polyethylene film, these garments have been designed to optimise barrier protection, cleanliness and comfort properties.

- Snap collar, raglan sleeves, snap closure, elasticated cuffs
- Superior fluid and particulate barrier
- Lowest level of particle shedding: Level 1 Helmke drum classification
- Light chemical splash resistance
- Improved breathability to ensure user comfort
- Soft, cloth-like fabric with maximum tear strength

Tested and manufactured in an ISO certified facility under stringent process controls. Lot-controlled and validated through independent laboratory testing.

Clothing size	Color	Pk	Cat. No.
M	White	25	113-1167
L	White	25	113-1168
XL	White	25	113-1169
XXL	White	25	113-1170

E-Commerce

Ordering our products has never been easier. Maximize your convenience by visiting vwr.com on your mobile device.

Go to
vwr.com



OVERALLS WITH HOOD, VWR® MAX PROTECTION, SMS, CAT III, TYPE 5/6

These durable, anti-static overalls are made of breathable and soft SMS, a spunbonded fabric with a unique tri-laminate construction, that offers a high tensile strength and toughness, plus provides a barrier to fluids and particulates.

- Elasticated hood
- Zip closure with flap
- Elasticated cuffs, ankles and waist, thumb loop
- Serged seams (stitching method)
- Low lint performance

These overalls can be used in medical, industrial, laboratory, electronic and pharmaceutical applications. Suitable for use in Critical Environments (IEST- RP-CC003.3 – Level I) and ISO Class 5 + 6 cleanrooms.

Weight: 60 g/m²

EN 340, EN 1149-5, EN 13034+A1 (Type 5), EN 13982-1+A1 (Type 6), EN 1073-2; Cat. III

Clothing size	Color	Pk	Cat. No.
S	White	50	113-8225
M	White	50	113-8226
L	White	50	113-8227
XL	White	50	113-8228
XXL	White	50	113-8229
3XL	White	50	113-8230
4XL	White	50	113-8588



CLEANROOM OVERALLS, VWR® BASIC, SMS

These cleanroom overalls are manufactured from a latex-free, multi-layer spunbonded-meltblown-spunbonded (SMS) fabric, that offers high tensile strength while remaining soft, comfortable and breathable.

- Tapered collar, inset sleeves, zip closure, elasticated cuffs
- Fluid and particulate barrier
- Light chemical splash resistance

Clothing size	Color	Pk	Cat. No.
M	White	25	113-1097
L	White	25	113-1098
XL	White	25	113-1099
XXL	White	25	113-1101
S	Blue	25	113-1090
M	Blue	25	113-1091
L	Blue	25	113-1092
XL	Blue	25	113-1093
XXL	Blue	25	113-1094



CLEANROOM OVERALLS, VWR® BASIC, SPP

VWR® Basic SPP overalls are manufactured from a strong, lightweight and breathable, spunbonded polypropylene (SPP) fabric, which protects against dirt, grime, and certain dry particulates, in non hazardous environments.

- Tapered collar, inset sleeves, zip closure, elasticated cuffs
- Lightweight and breathable first line barrier protection

This garment is ideal for less critical areas or pre-gowning entry rooms.

Tested and manufactured in an ISO certified facility also lot-controlled and validated through independent laboratory testing.

Clothing size	Color	Pk	Cat. No.
M	White	25	113-1104
L	White	25	113-1105
XL	White	25	113-1106
XXL	White	25	113-1107



CLEANROOM OVERALLS, VWR® ADVANCED, SF

VWR® Advanced SF overalls are manufactured from spunbonded polypropylene fabric, coated with breathable polyethylene film.

- Available with tapered collar or with hood and attached boot covers
- Inset sleeves, zip closure, elasticated cuffs
- Durable fabric, with good breathability and water transmission rate
- Significant fluid and particulate barrier
- Particle shedding: Level II Helmke drum classification
- Soft, cloth-like fabric

Tested and manufactured in an ISO certified facility under stringent process controls. Lot-controlled and validated through independent laboratory testing.

Clothing size	Color	Pk	Cat. No.
Overalls with collar			
S	White	25	113-1061
M	White	25	113-1062
L	White	25	113-1063
XL	White	25	113-1064
XXL	White	25	113-1065
Hooded overalls with attached fluid-impervious boot covers			
L	White	25	113-1069
XL	White	25	113-1070
XXL	White	25	113-1071



CLEANROOM OVERALLS, VWR® MAXIMUM, SF

VWR® Maximum SF overalls are the cleanest and most durable within the entire VWR clothing line. Made from spunbonded polypropylene fabric (SPP) and coated with breathable polyethylene film, these garments have been designed to optimise barrier protection, cleanliness and comfort properties.

- Available as a standard overall with collar, either elasticated ankles or non slip boot covers, or hooded overall with fluid-impervious boot covers
- Inset sleeves, zip closure, elasticated cuffs
- Superior fluid and particulate barrier
- Lowest level of particle shedding: Level 1 Helmke drum classification
- Light chemical splash resistance
- Improved breathability to ensure user comfort
- Soft, cloth-like fabric with maximum tear strength

Tested and manufactured in an ISO certified facility under stringent process controls. Lot-controlled and validated through independent laboratory testing.

Bacterial filtration efficiency	99,9%
---------------------------------	-------

Clothing size	Color	Pk	Cat. No.
Standard overall with collar			
M	White	25	113-1078
L	White	25	113-1079
XL	White	25	113-1080
XXL	White	25	113-1081
Overall with collar and attached non skid boot covers			
M	White	25	113-1085
L	White	25	113-1086
XL	White	25	113-1087
XXL	White	25	113-1088
Hooded overall with attached fluid-impervious boot covers			
M	White	25	113-1074
L	White	25	113-1075
XL	White	25	113-1076
XXL	White	25	113-1077



CHEMICAL RESISTANT CLEANROOM OVERALLS, TYPE 4/5/6

Disposable, anti-static overall made of a microporous film, with a nylon scrim between film and substrate, that gives the material additional strength.

- Hood
- Zip closure with flap
- Elasticated cuffs, ankles and waist
- Seams sealed with dark green tape (liquid proof)
- Anti-static
- Individually packed

This breathable garment provides protection against chemical dusts, paint sprays, asbestos, and other airborne particles. It can be used in any non hazardous environment where protection against dirt, grime, splashes and spills is required. Ideal for use in Critical Environments (IEST-RP-CC003.3 – Level I). Suitable for use in ISO Class 7 + 8 cleanroom environments.

Type 4/5/6, EN 340, EN 1149-5, EN 1073-2, EN 14126; Cat. III

Clothing size	Color	Pk	Cat. No.
S	White	50	113-8231
M	White	50	113-8232
L	White	50	113-8233
XL	White	50	113-8234
XXL	White	50	113-8235
3XL	White	50	113-8236



CLEANROOM SLEEVE PROTECTORS (BULK), VWR® ADVANCED, SF

VWR® Advanced SF sleeve protectors are manufactured from spunbonded polypropylene fabric (SPP), coated with breathable polyethylene film.

- Elasticated cuffs, with sonically-welded seams
- Durable fabric with good breathability and water transmission rate
- Significant fluid and particle barrier
- Particle shedding: Level II Helmke drum classification
- Soft, cloth-like fabric

Tested and manufactured in an ISO certified facility under stringent process controls. Lot-controlled and validated through independent laboratory testing.

Type	Length (mm)	Pk	Cat. No.
White	495	300	113-1194
White	546	300	113-1193



SHOE COVERS, NON SKID, VWR® ADVANCED

VWR® Advanced shoe covers are made of 49g durable PE laminated PP fabric. Soft, cloth-like fabric and water resistant.

- High coefficient of friction to provide excellent traction
- Durable fabric with good breathability
- Significant fluid and particulate barrier
- Particle shedding: Level II Helmke drum classification

Tested and manufactured in an ISO certified facility under stringent process controls. Lot-controlled and validated through independent laboratory testing.

Length: 394 mm (U*), 432 mm (XL), 470 mm (XXL)

Description	Size	Color	Pk	Cat. No.
Static dissipative	U*	Blue	300	113-1377
Standard	U*	Blue	300	113-1382
Static dissipative	XL	Blue	300	113-1378
Standard	XL	Blue	300	113-1383
Standard	XXL	Blue	300	113-1384



BOOT COVERS, NON SKID, VWR® MAXIMUM

VWR® Maximum boot covers are the cleanest and most durable within the entire VWR clothing line. Made from spunbonded polypropylene fabric (SPP) and coated with breathable polyethylene film, these garments have been designed to optimise barrier protection, cleanliness and comfort properties. Clean, low linting fabric.

- Non skid, Impervious material
- Superior friction coefficient to ensure maximum traction
- Maximum skid resistance on wet and smooth surfaces

Tested and manufactured in an ISO certified facility under stringent process controls. Lot-controlled and validated through independent laboratory testing.

Length: 286 mm (M), 356 mm (U*), 381 mm (XL)

Description	Size	Color	Pk	Cat. No.
Without ankle ties	M	White	100 PAIR	113-1187
Without ankle ties	L	White	100 PAIR	113-1188
Without ankle ties	XL	White	100 PAIR	113-1189
With ankle ties	M	White	100 PAIR	113-1192
With ankle ties	U*	White	100 PAIR	113-1190
With ankle ties	XL	White	100 PAIR	113-1191



SHOE COVERS, NON SKID, VWR® MAXIMUM

VWR® Maximum shoe covers are the cleanest and most durable within the entire VWR® clothing line. Made of 53g durable PE laminated PP fabric, these garments have been designed to optimise barrier protection, cleanliness and comfort properties.

- Non skid and anti-static
- Impervious to fluids
- Superior friction coefficient to ensure maximum traction
- Maximum skid resistance on wet and smooth surfaces
- Clean, low linting fabric

Tested and manufactured in an ISO certified facility under stringent process controls. Lot-controlled and validated through independent laboratory testing.

Length: 359 mm (U*), 292 mm (M), 324 mm (L), 381 mm (XL)

*U = One size fits all

Size	Color	Pk	Cat. No.
M	White	200	113-1371
M	Blue	200	113-1375
L	White	200	113-1372
L	Blue	200	113-1376
XL	White	200	113-1370
XL	Blue	200	113-1374
U*	White	200	113-1369
U*	Blue	200	113-1373



Fluid-impervious shoe covers, butterfly-style

SHOE COVERS, FLUID IMPERVIOUS, BUTTERFLY-STYLE, VWR® MAXIMUM

VWR® Maximum shoe covers are the cleanest and most durable within the entire VWR clothing line. These garments have been designed to optimise barrier protection, cleanliness and comfort properties.

- Fluid and particle impervious, sealed seams to repel water
- Superior friction coefficient to ensure maximum traction
- Clean, low linting fabric

Tested and manufactured in an ISO certified facility under stringent process controls. Lot-controlled and validated through independent laboratory testing.

Length: 394 mm (U*), 432 mm (XL), 483 mm (XXL)

Size	Color	Pk	Cat. No.
XL	Blue	150	113-1367
XXL	Blue	150	113-1368
U*	Blue	150	113-1366
XL	White	150	113-1380
XXL	White	150	113-1381
U*	White	150	113-1379

Cleanroom wipes



CLEANROOM WIPES, STERILE, SPEC-WIPE® 4

These wipes are made from double-woven polyester fabric with close-cut edges and are washed in an ISO Class 4 cleanroom to minimise contamination by particles and extractables.

- For critical process cleaning and environments where sterility, low particle and fibre generation are critical
- Gamma sterilised to 10^{-6} SAL (Sterility Assurance Level)
- Resealable pouches to protect wipes from contamination

Ideal for cleaning abrasive surfaces, yet still soft enough for use on sensitive surfaces.

Suitable for use in Grade A, ISO 4 cleanrooms.

Color: White

Compliant with ANSI/AAMI/ISO guidelines

LxW (mm)	Packed	Pk	Cat. No.
305x305	20/inner bag, 5 inner bags/outer bag, 3 outer bags/case	300	115-1724

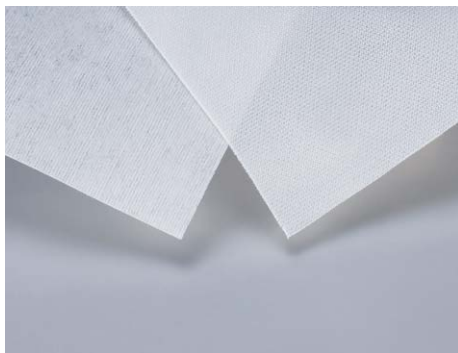


CLEANROOM WIPES, B'WIPES, 4000 SERIES

Polyester sealed-edge wipe for use in ISO 4 cleanrooms.

- Single-knit polyester wipe, with sealed edges (150 g/m^2)
- Laundered and with sealed edges, for superior cleanliness
- Good mechanical resistance and absorption capacity
- Ideal for cleaning and disinfecting surfaces in critical environments

Description	LxW (mm)	Packed	Pk	Cat. No.
Series 4000 wipes	230x230	Stacked, 2x75	150	115-1827



CLEANROOM WIPES

These cleanroom wipes are made from 100% virgin grade, continuous filament polyester in a double-knit, no run interlock pattern to provide maximum cleanliness and absorbency.

- Laser cut with sealed edges
- Minimum particles, fibres, extractables and ions: Ideal for environments that demand low levels of contaminants
- Ultra-clean, highly absorbent and durable
- Economical
- Cleanroom laundered and packaged (ISO Class 4)

Designed for cleaning surfaces and controlling spills in ISO Class 3 or higher cleanroom environments, these durable wipes resist fibre release and abrasion under rigorous use, even when wiping rough surfaces.

Suitable for use in Class 1, ISO 3 environments.

Color: White

LxW (mm)	Packed	Pk	Cat. No.
229x229	150/bag	150	115-0660
305x305	150/bag	150	115-0661

CLEANROOM WIPES, SPEC-WIPE® 7

Ideal for cleaning rough or uneven surfaces, yet still soft enough for use on sensitive surfaces. Use these 100% double-knit polyester wipes where minimum particle and fibre contamination is essential.

- Double-knit for extreme durability, continuous single filaments for extra softness
- Sealed edges prevent release of fibres and lint
- Laundered in an ISO Class 4 cleanroom to reduce particulate and extractable contaminants

Suitable for use in Class 1, ISO Class 3 cleanrooms.

Color: White



Description	LxW (mm)	Packed	Pk	Cat. No.
Spec-Wipe® 7	229x229	100 wipes/bag	100	115-0043
Spec-Wipe® 7	305x305	100 wipes/bag	100	115-0044

CLEANROOM WIPES, B'WIPES, 5000 SERIES

Polyester sealed-border wipe for use in ISO 3 cleanrooms.

- Double knit polyester wipe, with sealed borders (135 g/m²)
- Laundered and with sealed borders, for low release of fibres even under mechanical stress
- Good mechanical resistance and absorption capacity
- Ideal for cleaning heavy soils and disinfecting surfaces in critical areas



Description	LxW (mm)	Packed	Pk	Cat. No.
Series 5000 wipes	230x230	Stacked, 2x75	150	115-1902

CLEANROOM MOP WIPE

This mop wipe is made from 2 ply quilted knitted polyester with thin sealed edges.

- Constructed from continuous-filament polyester in interlock knitting
- High absorbency
- Low particle and fibre contamination
- Ultrasonic bonded two-layer construction
- Processed and packed in an ISO 5 cleanroom

Ideal for mopping floors and walls, as well as spill control in ISO 5 and above environments.

Suitable for use in pharmaceutical production, microelectronic facilities and other high-tech industries.

Weight: 220 g/m²

LxW (mm)	Packed	Color	Pk	Cat. No.
250x600	25/bag, 10 bags/box	White	250	141-1402

CLEANROOM WIPES, B'WIPES, 6000 SERIES

2 ply polyester sealed-border wipe for use in ISO 3 cleanrooms.

- Quilted polyester wipe, constructed from 2 plies, with sealed borders
- Laundered and with sealed borders, for excellent cleanliness
- 2 ply quilted, for extreme absorption
- Ideal for spill control in critical areas, and for applying a cleaning/disinfecting solution over a large surface



Description	LxW (mm)	Packed	Pk	Cat. No.
Series 6000 wipes	230x230	Stacked, 2x50	100	115-1821
Series 6000 wipes	230x230	Bulk, 2x50	100	115-1823

CLEANROOM WIPE

This wipe is made from 2 ply quilted knitted polyester with wide sealed borders.

- Constructed from continuous-filament polyester in interlock knitting
- High absorbency
- Low particle and fibre contamination
- Ultrasonic bonded two-layer construction
- Processed and packed in an ISO 4 cleanroom

Ideal for wiping interior of process tools and other equipment as well as for spill control and general wiping in ISO 5 and above environments. Suitable for use in pharmaceutical production, microelectronic facilities and other high-tech industries.

Weight: 220 g/m²

LxW (mm)	Packed	Color	Pk	Cat. No.
310x310	2x50/bag, 10 bags/case	White	1.000	115-2446

CLEANROOM WIPES, B'WIPES, 7000 SERIES

Microfibre sealed-edge wipe for use in ISO 3 cleanrooms.

- Microfibre polyester/nylon wipe, with sealed edges (165 g/m²)
- Laundered and with sealed edges, for excellent cleanliness
- Very fine microfibre filaments, densely knitted, greatly increase the quantity of contaminants picked up by the wipe, even when dry
- Reduces the risk of scratching sensitive surfaces, such as optics
- Ideal for cleaning sensitive surfaces, or when wet wiping is not an option



Description	LxW (mm)	Packed	Pk	Cat. No.
Series 7000 wipes	150x150	Stacked, 10x10	100	115-1824
Series 7000 wipes	230x230	Stacked, 10x10	100	115-1829

Cleanroom wipes

Durable fabric cleanroom wipes resist fiber release and abrasion under rigorous use, even when wiping rough surfaces. These soft, line-free wipes are great for use in environmentally sensitive applications, such as wiping optical parts, delicate glassware, electrodes, cuvettes, microscopes, and lenses. Can come premoistened or dry. Clean-cut edges result in less linting and snagging. Designed for critical-process cleaning and environments where low particle and fiber generation is critical. Appropriate for electronics, pharmaceutical, biotechnology, chemical and petroleum, environmental, and education industries.

Description	Cat. No.
VWR® POLYESTER WIPER, STERILE, 135GSM, 9X9 INCH	VWRA115-2831
VWR® NON-WOVEN WIPER, 68GSM, 9X9 INCH	VWRA115-2841
VWR® POLYESTER WIPER, 135GSM, 9X9 INCH	VWRA115-2839
VWR® NON-WOVEN WIPER, STERILE, 68GSM, 9X9 INCH	VWRA115-2832
VWR® PRE-SATURATED NON-WOVEN WIPERS STERILE	VWRA115-3090
WIPE POLYESTER 2PLY SB 31X31CM STERILE	VWRI115-2470
MOP WIPE POLYESTER 2PLY SE STERILE	VWRI141-1442
VWR® CLEANROOM WIPERS 120GSM 12"x12"	VWRI10835-982
VWR® CLEANROOM WIPERS 120GSM 9"x9"	VWRI76017-942
VWR® CLEANROOM NONWOVEN WIPER 12IN	VWRI414004-514
VWR® CLEANROOM NONWOVEN WIPER 9IN	VWRI414004-515
VWR® POLYESTER WIPER, STERILE	VWRI115-2461
VWR® POLYESTER WIPER, STERILE	VWRI115-2463
VWR® POLYESTER WIPER, STERILE	VWRI115-2462

VWR® swab

Critical swabs designed for cleaning disc drives, optics, PC board assemblies and other sensitive components.

- Highly absorbent
- Low linting formulation reduces contamination
- Double-headed items in a white, anti-static leaf pack



Description	Case QTY	Cat. No.
VWR® SWAB CR 5IN LG FLAT FOAM HEAD BX1000	1000	76478-838
VWR® SWAB CR 4IN MD FLAT FOAM HEAD BX1000	1000	76478-840
VWR® SWAB CR 4IN LG FLAT FOAM HEAD BX1000	1000	76478-842
VWR® SWAB CR 6IN MD FLAT FOAM HEAD BX2500	2500	76478-844
VWR® SWAB CR 3IN SM FLX FOAM HEAD BX2500	2500	76478-846
VWR® SWAB CR 3IN SM ROUND FOAMHEAD BX2500	2500	76478-848
VWR® SWAB CR 3IN SM POINT FOAMHEAD BX2500	2500	76478-850
VWR® SWAB CR 3IN MD POINT FOAMHEAD BX2500	2500	76478-852
VWR® SWAB CR 3IN SM FLAT FOAM HEAD BX2500	2500	76478-854



Avantor Storage Solutions

VWR® offers boxes for vials to help organize and manage your lab's samples. Boxes of polycarbonate and cardboard feature removable dividers and rack. Boxes for vials are available individually and in multipacks and cases.





VWR® CRYOVIALS STERILE & NON-STERILE

BSE/TSE Statement: These product is manufactured without the use of raw materials of animal origin

Latex Free Statement: No materials containing latex or natural rubber are used in the manufacturing, handling and packaging processes for this product

Material Vial: PP 100 % Virgin, FDA 21 CFR Compliance, USP Class VI passed

Closure: HDPE, 100 % Virgin, FDA 21 CFR Compliance, USP Class VI passed

Clean Statement: Free of detectable DNase, RNase & Pyrogen

Description	Capacity ml	Brim Volume ml	Thread type	Foot type	Neck Internal Neck Internal diameter	Tube OD (mm)	General Wall thickness (mm)	Height with Closure (mm)	Closure OD (mm)	Weight (gms)	Graduation range	Gamma Sterilized	Cat. No.
CRYOVIAL EXT TRD SF 1/1.2 ML	1 / 1.2ml	1.8ml	External Threaded	Star Foot	9.8	12	1.2	35	13.8	1.53	0.5 - 1ml	Yes	VWRI210-000001
CRYOVIAL EXT TRD SF 1.8/2 ML	1.8 / 2ml	2.6ml	External Threaded	Star Foot	9.8	12	1.2	46.9	13.8	1.98	0.5 - 1.8ml	Yes	VWRI210-000003
CRYOVIAL EXT TRD SF 3 ML	3ml	4.2ml	External Threaded	Star Foot	9.8	12	1.2	69.6	13.8	2.79	0.5 - 3.0ml	Yes	VWRI210-000007
CRYOVIAL EXT TRD SF 3.6/4 ML	3.6 / 4ml	4.5ml	External Threaded	Star Foot	9.8	12.1	1.2	74.1	13.8	2.95	0.5 - 3.0ml	Yes	VWRI210-000008
CRYOVIAL EXT TRD SF 4.5/5 ML	4.5 / 5ml	5.5ml	External Threaded	Star Foot	9.8	12	1.2	89.9	13.8	3.38	0.5 - 4.5ml	Yes	VWRI210-000011
CRYOVIAL EXT TRD SS 1/1.2 ML	1 / 1.2ml	1.8ml	External Threaded	Self Standing	9.8	12.1	1.2	41.2	13.8	1.91	0.5 - 1ml	Yes	VWRI210-000002
CRYOVIAL EXT TRD SS 1.8/2 ML	1.8 / 2ml	2.6ml	External Threaded	Self Standing	9.8	12	1.22	48	13.8	2.02	0.5 - 1.8ml	Yes	VWRI210-000004
CRYOVIAL EXT TRD SS 3 ML	3ml	4.2ml	External Threaded	Self Standing	9.8	12.1	1.2	70.7	13.8	2.86	0.5 - 3ml	Yes	VWRI210-000006
CRYOVIAL EXT TRD SS 3.6/4 ML	3.6 / 4ml	4.5ml	External Threaded	Self Standing	9.8	12.1	1.2	75.2	13.8	3.02	0.5 - 3.5ml	Yes	VWRI210-000009
CRYOVIAL EXT TRD SS 4.5/5 ML	4.5 / 5ml	5.5ml	External Threaded	Self Standing	9.8	12	1.22	91	13.8	3.44	0.5 - 4.5ml	Yes	VWRI210-000010
CRYOVIAL EXT TRD RB 1.8/2 ML	1.8 / 2ml	2.6ml	External Threaded	Round Bottom	9.8	12.1	1.2	46	13.8	2	0.5 - 1.8ml	Yes	VWRI210-000005
CRYOVIAL INT TRD SF 1/1.2 ML W/ WASHER	1 / 1.2ml	1.2ml	Internal Threaded	Star Foot	10.4	12.4	1.2	41.5	12.2	1.81	0.5 - 1ml	Yes	VWRI210-000012
CRYOVIAL INT TRD SF 1.8/2 ML W/ WASHER	1.8 / 2ml	2.2ml	Internal Threaded	Star Foot	10.4	12.4	1.05	47.8	12.2	1.88	0.5 - 1.8ml	Yes	VWRI210-000013
CRYOVIAL INT TRD SF 3.6/4 ML W/ WASHER	3.6 / 4ml	5ml	Internal Threaded	Star Foot	10.4	12.4	1	77.5	12.2	2.8	0.5 - 3.5ml	Yes	VWRI210-000017
CRYOVIAL INT TRD SF 4.5/5 ML W/ WASHER	4.5 / 5ml	5.5ml	Internal Threaded	Star Foot	10.4	12.4	1.15	90.3	12.2	3.4	0.5 - 4.5ml	Yes	VWRI210-000019
CRYOVIAL INT TRD SS 1.8/2 ML W/ WASHER	1.8 / 2ml	2.2ml	Internal Threaded	Self Standing	10.4	12.4	1.05	48.9	12.2	1.93	0.5 - 1.8ml	Yes	VWRI210-000014
CRYOVIAL INT TRD SS 3.6/4 ML W/ WASHER	3.6 / 4ml	5.0ml	Internal Threaded	Self Standing	10.4	12.4	1	78.6	12.2	2.89	0.5 - 3.5ml	Yes	VWRI210-000016
CRYOVIAL INT TRD SS 4.5/5 ML W/ WASHER	4.5 / 5ml	6.2ml	Internal Threaded	Self Standing	10.4	12.4	1	92.8	12.2	2.69	0.5 - 4.5ml	Yes	VWRI210-000020
CRYOVIAL INT TRD RB 1.8/2 ML W/ WASHER	1.8 / 2ml	2.8ml	Internal Threaded	Round Bottom	10.4	12.4	1	49.2	12.2	1.9	0.5 - 1.8ml	Yes	VWRI210-000015
CRYOVIAL INT TRD RB 3.6/4 ML W/ WASHER	3.6 / 4ml	5.0ml	Internal Threaded	Round Bottom	10.4	12.4	1	77	12.2	2.78	0.5 - 2ml	Yes	VWRI210-000018
CRYOVIAL INT TRD RB 4.5/5 ML W/ WASHER	4.5 / 5ml	5.5ml	Internal Threaded	Round Bottom	10.4	12.4	1	91	12.2	3.22	0.5 - 4.5ml	Yes	VWRI210-000021
CRYOVIAL 2D EXT TRD W/CAP SS 2ML	2ml	2.6ml	External Threaded	Self Standing	9.8	12	1.22	48	13.8	2.02	0.5 - 1.8ml	Yes	VWRI210-000026
CRYOVIAL 2D IN 81 RACK BLUE 2ML	2ml	2.6ml	External Threaded	Self Standing	9.8	12	1.22	48	13.8	2.02	0.5 - 1.8ml	Yes	VWRI210-000027
CRYOVIAL 2D IN 81 RACK GREEN 2ML	2ml	2.6ml	External Threaded	Self Standing	9.8	12	1.22	48	13.8	2.02	0.5 - 1.8ml	Yes	VWRI210-000028
CRYOVIAL 2D IN 81 RACK RED 2ML	2ml	2.6ml	External Threaded	Self Standing	9.8	12	1.22	48	13.8	2.02	0.5 - 1.8ml	Yes	VWRI210-000029
CRYOVIAL 2D IN 81 RACK YELLOW 2ML	2ml	2.6ml	External Threaded	Self Standing	9.8	12	1.22	48	13.8	2.02	0.5 - 1.8ml	Yes	VWRI210-000030

Description	Cat. No.
CAP INSERT VIOLET	VWRI210-000031
CAP INSERT WHITE	VWRI210-000032
CAP INSERT 5 COLORS	VWRI210-000033
CAP INSERT CRYOVIAL BLUE	VWRI210-000034
CAP INSERT CRYOVIAL BURTORANGE	VWRI210-000035
CAP INSERT CRYOVIAL LILAC	VWRI210-000036
CAP INSERT CRYOVIAL RED	VWRI210-000037
CAP INSERT CRYOVIAL TAN	VWRI210-000038
CAP INSERT CRYOVIAL YELLOW	VWRI210-000039
CAP INSERT GREEN	VWRI210-000040
CAP INSERT GREY	VWRI210-000041
CAP INSERTCRYOVIAL PINK	VWRI210-000042



CRYOBIXES

Cryoboxes are suitable to store up to $-186\text{ }^{\circ}\text{C}$.

- Suitable for storage temperatures down to $-186\text{ }^{\circ}\text{C}$
- Available in a variety of color options
- Grid option for coding on lid
- Clear lid material

Made with PC material.

Boxes are stackable. Designed for 25, 81, or 100 places to store both internal and external threaded vials (1 - 5 ml).

Base made with color options red, blue, green, white, and yellow. Lid has grid option for coding and made with clear material.

Cryo tube picker is included.

Compartments	Color	For Tubes (ml)	WxDxH ext. (mm)	Pk	Cat. No.
25	Assorted	1 - 2	75,6x75,6x51,8	5	479-2388
25	Blue	1 - 2	75,6x75,6x51,8	5	479-2389
25	Green	1 - 2	75,6x75,6x51,8	5	479-2390
25	Red	1 - 2	75,6x75,6x51,8	5	479-2391
25	White	1 - 2	75,6x75,6x51,8	5	479-2392
25	Yellow	1 - 2	75,6x75,6x51,8	5	479-2393
81	Assorted	1 - 2	132,0x132,0x53,0	5	479-2394
81	Blue	1 - 2	132,0x132,0x53,0	5	479-2395
81	Green	1 - 2	132,0x132,0x53,0	5	479-2396
81	Red	1 - 2	132,0x132,0x53,0	5	479-2397
81	White	1 - 2	132,0x132,0x53,0	5	479-2398
81	Yellow	1 - 2	132,0x132,0x53,0	5	479-2399
81	Assorted	3	132,0x132,0x81,1	5	479-2400
81	Blue	3	132,0x132,0x81,1	5	479-2401
81	Green	3	132,0x132,0x81,1	5	479-2402
81	Red	3	132,0x132,0x81,1	5	479-2403
81	White	3	132,0x132,0x81,1	5	479-2404
81	Yellow	3	132,0x132,0x81,1	5	479-2405
100	Assorted	1 - 2	132,0x132,0x53,0	5	479-2406
100	Blue	1 - 2	132,0x132,0x53,0	5	479-2407
100	Green	1 - 2	132,0x132,0x53,0	5	479-2408
100	Red	1 - 2	132,0x132,0x53,0	5	479-2409
100	White	1 - 2	132,0x132,0x53,0	5	479-2410
100	Yellow	1 - 2	132,0x132,0x53,0	5	479-2411
81	Assorted	4 - 5	132,0x132,0x94,3	5	479-2412
81	Blue	4 - 5	132,0x132,0x94,3	5	479-2414
81	Green	4 - 5	132,0x132,0x94,3	5	479-2415
81	Red	4 - 5	132,0x132,0x94,3	5	479-2416
81	White	4 - 5	132,0x132,0x94,3	5	479-2417
81	Yellow	4 - 5	132,0x132,0x94,3	5	479-2418



CRYOBIXES FOR CENTRIFUGE TUBES

PP, autoclavable.

- Labelled zone and numerical grid references
- Clear cover
- Autoclavable ($121\text{ }^{\circ}\text{C}$), temperature resistant to $-90\text{ }^{\circ}\text{C}$
- Sustainable design based on virgin resins

For long-term storage of samples.

Environmentally preferable attribute

Low Manufacturing Impact, Sustainable Packaging

Description	For tubes (ml)	WxDxH ext. (mm)	Pk	Cat. No.
For 16 tubes with lid	50	138x138x126	2	479-0079



SCIENCE *DELIVERED*

From scientific discovery to scale-up and commercial delivery, you need mission-critical products, services and solutions on a global scale.

Avantor® offers global access to our own portfolio of trusted, quality brands and critical products through our premier delivery platform, VWR®. All of this, combined with infrastructure strategically located to help serve your specific needs, helps move science forward – fast. That's **science delivered**.

Get the mission-critical scientific products and solutions you need from Avantor, delivered through VWR®.

👉 vwr.com/science-delivered

 **avantor**™
delivered by **VWR**™